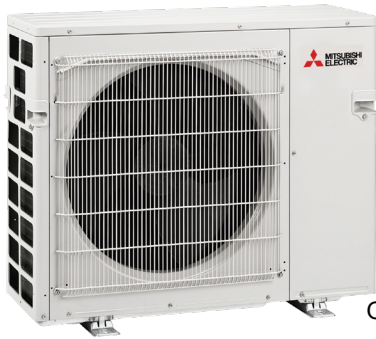


Job Name:

System Reference:

Date:



Outdoor Unit: MXZ-4C36NA2

ACCESSORIES

- 3/8" x 1/2" Port Adapter (MAC-A454JP)
- 1/2" x 3/8" Port Adapter (MAC-A455JP)
- 1/2" x 5/8" Port Adapter (MAC-A456JP)
- 1/4" x 3/8" Port Adapter (PAC-493PI)
- 3/8" x 5/8" Port Adapter (PAC-SG76RJ)
- M-NET Adapter (PAC-IF01MNT-E)
- Base Heater (PAC-645BH-E)

(For data on specific indoor units, see the MXZ-C Technical and Service Manual.)

Specifications			Model Name
Unit Type			MXZ-4C36NA2
Cooling* (Non-ducted / Ducted)	Rated Capacity	Btu/h	35,400 / 34,400
	Capacity Range	Btu/h	9,500 - 36,400 / 9,500 - 34,400
	Rated Total Input	W	3,760 / 3,940
Heating at 47°F* (Non-ducted / Ducted)	Rated Capacity	Btu/h	36,000 / 34,400
	Capacity Range	Btu/h	15,500 - 43,000 / 15,500 - 41,400
	Rated Total Input	W	3,020 / 3,100
Heating at 17°F* (Non-ducted/Ducted)	Rated Capacity	Btu/h	22,200 / 20,300
	Rated Total Input	W	3,340 / 3,450
Connectable Capacity		Btu/h	12,000 - 42,000
Electrical Requirements	Power Supply	Voltage, Phase, Hertz	208 / 230V, 1-Phase, 60 Hz
	Recommended Fuse/Breaker Size	A	25
	MCA	A	22.1
Voltage	Indoor - Outdoor S1-S2	V	AC 208 / 230
	Indoor - Outdoor S2-S3	V	DC ±24
Compressor			INVERTER-driven Scroll Hermetic
Fan Motor (ECM)		F.L.A.	2.43
Sound Pressure Level	Cooling	dB(A)	54
	Heating	dB(A)	56
External Dimensions (H x W x D)		In mm	31-11/32 x 37-13/32 x 13 (796 x 950 x 330)
Net Weight		Lbs / kg	139 (63)
External Finish			Munsell 3.0Y 7.8/1.1
Refrigerant Pipe Size O.D.	Liquid (High Pressure)	In / mm	1/4 (12.7)
	Gas (Low Pressure)	In / mm	A: 1/2 (6.35) ; B,C,D: 3/8 (9.52) 230 (70)
Max. Refrigerant Line Length		Ft / m	230 (70)
Max. Piping Length for Each Indoor Unit		Ft / m	82 (25)
Max. Refrigerant Pipe Height Difference	If IDU is Above ODU	Ft / m	49 (15)
	If IDU is Below ODU	Ft / m	49 (15)
Connection Method			Flared/Flared
Refrigerant			R410A

* Rating Conditions per AHRI Standard:

Cooling | Indoor: 80° F (27° C) DB / 67° F (19° C) WB
Cooling | Outdoor: 95° F (35° C) DB / 75° F (24° C) WB

Heating at 47°F | Indoor: 70° F (21° C) DB
Heating at 47°F | Outdoor: 47° F (8° C) DB / 43° F (6° C) WB

Heating at 17° F | Indoor: 70° F (21° C) DB
Heating at 17° F | Outdoor: 17° F (-8° C) DB / 15° F (-9° C) WB

SPECIFICATIONS: MXZ-4C36NA2

OPERATING RANGE:

	Outdoor
Cooling	14 to 115° F (-10 to 46° C) DB
Heating	5 to 65° F (-15 to 18° C) WB

ENERGY EFFICIENCIES:

Indoor Unit Type	SEER	EER	HSPF	COP @ 47°F	COP @ 17°F
Non-ducted (09+09+09+09)	19.2	9.4	11.0	3.50	2.67
Ducted and Non-ducted	17.6	9.05	10.4	3.38	2.61
Ducted (09+09+09+09)	16.0	8.7	9.8	3.25	2.54

NOTES:

- Minimum of two Indoor Units must be connected to the MXZ-4C36NA2.
- Minimum installed capacity cannot be less than 12,000 Btu/h.
- Total connected capacity must not exceed 130% of outdoor unit capacity.
- System can operate with only one Indoor Unit turned on.
- Information provided at 208/230V.
- For Reference:
 - MXZ-C Technical & Service Manual for detailed specifications and additional information per Indoor Unit Combination.
 - MXZ Series Multi-Zone Indoor/Outdoor Combination Table for allowed unit combinations.

MVZ CONNECTION RULES:

- Only 1 MVZ may be used on any system.
- When an MVZ is connected, total connected capacity must be 100% or less.
- When an MVZ is connected, no P-Series indoor units can be used (PCA, PLA, or PEAD).

NOTES:

MXZ-4C36NA2 OPERATIONAL PERFORMANCE, CONTD.

NON-DUCTED:

# of indoor unit	Total Nominal Capacity (x1000 Btu/h)	Total Indoor Unit Capacity (Btu/h)	Operational Performance for Indoor Unit Combinations (Unit A + Unit B + Unit C + Unit D)	Cooling Capacity Range (Btu/h)			
				Heating Capacity Range (Btu/h)			
				Unit A	Unit B	Unit C	Unit D
1	6	6,000	6	6,000	-	-	-
		7,400		7,400	-	-	-
1	9	9,000	9	9,000	-	-	-
		11,000		11,000	-	-	-
1	12	12,000	12	12,000	-	-	-
		14,400		14,400	-	-	-
1	15	14,000	15	14,000	-	-	-
		18,000		18,000	-	-	-
1	18	17,200	18	17,200	-	-	-
		21,600		21,600	-	-	-
1	24	22,500	24	22,500	-	-	-
		27,600		27,600	-	-	-
2	12	12,000	6 + 6	6,000	6,000	-	-
		14,800		7,400	7,400	-	-
2	15	15,000	6 + 9	6,000	9,000	-	-
		18,400		7,400	11,000	-	-
2	18	18,000	6 + 12	6,000	12,000	-	-
		22,000		7,500	14,500	-	-
2	18	18,000	9 + 9	9,000	9,000	-	-
		22,000		11,000	11,000	-	-
2	21	20,000	6 + 15	6,000	14,000	-	-
		25,400		7,400	18,000	-	-
2	21	20,000	9 + 12	8,600	11,400	-	-
		25,400		11,000	14,400	-	-
2	24	23,000	6 + 18	5,900	17,100	-	-
		28,000		7,100	20,900	-	-
2	24	23,000	9 + 15	9,000	14,000	-	-
		28,000		10,600	17,400	-	-
2	24	23,000	12 + 12	11,500	11,500	-	-
		28,000		14,000	14,000	-	-
2	27	25,800	9 + 18	8,900	16,900	-	-
		28,000		9,400	18,600	-	-
2	27	25,800	12 + 15	11,900	13,900	-	-
		28,000		12,400	15,600	-	-
2	30	28,000	6 + 24	5,900	22,100	-	-
		28,000		5,900	22,100	-	-
2	30	28,000	12 + 18	11,500	16,500	-	-
		28,000		11,200	16,800	-	-
2	30	28,000	15 + 15	14,000	14,000	-	-
		28,000		14,000	14,000	-	-
2	33	28,000	9 + 24	8,000	20,000	-	-
		28,000		8,000	20,000	-	-
2	33	28,000	15 + 18	12,600	15,400	-	-
		28,000		12,700	15,300	-	-
2	36	28,000	12 + 24	9,700	18,300	-	-
		28,000		9,600	18,400	-	-
2	36	28,000	18 + 18	14,000	14,000	-	-
		28,000		14,000	14,000	-	-
3	18	18,000	6 + 6 + 6	6,000	6,000	6,000	-
		22,200		7,400	7,400	7,400	-
3	21	21,000	6 + 6 + 9	6,000	6,000	9,000	-
		25,800		7,400	7,400	11,000	-
3	24	24,000	6 + 6 + 12	6,000	6,000	12,000	-
		29,200		7,400	7,400	14,400	-
3	27	26,000	6 + 6 + 15	6,000	6,000	14,000	-
		32,800		7,400	7,400	18,000	-
3	30	28,400	6 + 6 + 18	5,800	5,800	16,700	-
		32,800		6,700	6,700	19,500	-
3	36	32,000	6 + 6 + 24	5,600	5,600	20,900	-
		32,800		5,700	5,700	21,400	-

MXZ-4C36NA2 OPERATIONAL PERFORMANCE, CONTD.

NON-DUCTED:

# of indoor unit	Total Nominal Capacity (x1000 Btu/h)	Total Indoor Unit Capacity (Btu/h)	Operational Performance for Indoor Unit Combinations (Unit A + Unit B + Unit C + Unit D)	Cooling Capacity Range (Btu/h)			
				Heating Capacity Range (Btu/h)			
				Unit A	Unit B	Unit C	Unit D
3	24	24,000	6 + 9 + 9	6,000	9,000	9,000	-
		29,200		7,300	10,900	10,900	-
3	27	26,000	6 + 9 + 12	5,800	8,700	11,600	-
		32,800		7,400	11,000	14,400	-
3	30	28,400	6 + 9 + 15	5,900	8,800	13,700	-
		32,800		6,700	9,900	16,200	-
3	33	32,000	6 + 9 + 18	6,000	8,900	17,100	-
		32,800		6,100	9,000	17,700	-
3	39	32,000	6 + 9 + 24	5,100	7,700	19,200	-
		32,800		5,300	7,800	19,700	-
3	30	28,400	6 + 12 + 12	5,700	11,400	11,400	-
		32,800		6,700	13,000	13,000	-
3	33	32,000	6 + 12 + 15	6,000	12,000	14,000	-
		32,800		6,100	11,900	14,800	-
3	36	32,000	6 + 12 + 18	5,500	10,900	15,600	-
		32,800		5,600	10,900	16,300	-
3	42	32,000	6 + 12 + 24	4,700	9,500	17,800	-
		32,800		4,900	9,600	18,300	-
3	36	32,000	6 + 15 + 15	5,600	13,200	13,200	-
		32,800		5,600	13,600	13,600	-
3	39	32,000	6 + 15 + 18	5,200	12,000	14,800	-
		32,800		5,200	12,600	15,100	-
3	42	32,000	6 + 18 + 18	4,800	13,600	13,600	-
		32,800		4,800	14,000	14,000	-
3	27	26,000	9 + 9 + 9	8,700	8,700	8,700	-
		32,800		10,900	10,900	10,900	-
3	30	28,400	9 + 9 + 12	8,500	8,500	11,400	-
		32,800		9,900	9,900	13,000	-
3	33	32,000	9 + 9 + 15	9,000	9,000	14,000	-
		32,800		9,000	9,000	14,800	-
3	36	32,000	9 + 9 + 18	8,200	8,200	15,600	-
		32,800		8,300	8,300	16,200	-
3	42	32,000	9 + 9 + 24	7,100	7,100	17,800	-
		32,800		7,300	7,300	18,300	-
3	33	32,000	9 + 12 + 12	8,700	11,600	11,600	-
		32,800		9,100	11,900	11,900	-
3	36	32,000	9 + 12 + 15	8,200	11,000	12,800	-
		32,800		8,300	10,900	13,600	-
3	39	32,000	9 + 12 + 18	7,500	10,100	14,400	-
		32,800		7,700	10,000	15,100	-
3	39	32,000	9 + 15 + 15	7,800	12,100	12,100	-
		32,800		7,700	12,600	12,600	-
3	42	32,000	9 + 15 + 18	7,200	11,100	13,700	-
		32,800		7,100	11,700	14,000	-
3	36	32,000	12 + 12 + 12	10,700	10,700	10,700	-
		32,800		10,900	10,900	10,900	-
3	39	32,000	12 + 12 + 15	10,100	10,100	11,800	-
		32,800		10,100	10,100	12,600	-
3	42	32,000	12 + 12 + 18	9,300	9,300	13,400	-
		32,800		9,400	9,400	14,100	-
3	42	32,000	12 + 15 + 15	9,600	11,200	11,200	-
		32,800		9,400	11,700	11,700	-
4	24	24,000	6 + 6 + 6 + 6	6,000	6,000	6,000	6,000
		29,600		7,400	7,400	7,400	7,400
4	27	27,000	6 + 6 + 6 + 9	6,000	6,000	6,000	9,000
		33,200		7,400	7,400	7,400	11,000
4	30	30,000	6 + 6 + 6 + 12	6,000	6,000	6,000	12,000
		35,800		7,200	7,200	7,200	14,100
4	33	32,000	6 + 6 + 6 + 15	6,000	6,000	6,000	14,000
		35,800		6,600	6,600	6,600	16,000

MXZ-4C36NA2 OPERATIONAL PERFORMANCE, CONTD.

NON-DUCTED:

# of indoor unit	Total Nominal Capacity (x1000 Btu/h)	Total Indoor Unit Capacity (Btu/h)	Operational Performance for Indoor Unit Combinations (Unit A + Unit B + Unit C + Unit D)	Cooling Capacity Range (Btu/h)			
				Heating Capacity Range (Btu/h)			
				Unit A	Unit B	Unit C	Unit D
4	36	32,000	6 + 6 + 6 + 18	5,500	5,500	5,500	15,600
		32,800		5,500	5,500	5,500	16,200
4	42	32,000	6 + 6 + 6 + 24	4,700	4,700	4,700	17,800
		32,800		4,900	4,900	4,900	18,200
4	30	30,000	6 + 6 + 9 + 9	6,000	6,000	9,000	9,000
		35,800		7,200	7,200	10,700	10,700
4	33	32,000	6 + 6 + 9 + 12	5,800	5,800	8,700	11,600
		35,800		6,600	6,600	9,800	12,800
4	36	35,400	6 + 6 + 9 + 15	6,100	6,100	9,100	14,200
		36,000		6,100	6,100	9,000	14,800
4	39	36,000	6 + 6 + 9 + 18	5,700	5,700	8,500	16,200
		36,000		5,600	5,600	8,400	16,400
4	36	35,400	6 + 6 + 12 + 12	5,900	5,900	11,800	11,800
		36,000		6,100	6,100	11,900	11,900
4	39	36,000	6 + 6 + 12 + 15	5,700	5,700	11,400	13,300
		36,000		5,600	5,600	11,000	13,700
4	42	36,000	6 + 6 + 12 + 18	5,200	5,200	10,500	15,000
		36,000		5,200	5,200	10,200	15,300
4	42	36,000	6 + 6 + 15 + 15	5,400	5,400	12,600	12,600
		36,000		5,200	5,200	12,800	12,800
4	33	32,000	6 + 9 + 9 + 9	5,800	8,700	8,700	8,700
		35,800		6,600	9,700	9,700	9,700
4	36	35,400	6 + 9 + 9 + 12	5,900	8,900	8,900	11,800
		36,000		6,100	9,000	9,000	11,800
4	39	36,000	6 + 9 + 9 + 15	5,700	8,500	8,500	13,300
		36,000		5,600	8,400	8,400	13,700
4	42	36,000	6 + 9 + 9 + 18	5,200	7,900	7,900	15,000
		36,000		5,200	7,800	7,800	15,200
4	39	36,000	6 + 9 + 12 + 12	5,500	8,300	11,100	11,100
		36,000		5,600	8,400	11,000	11,000
4	42	36,000	6 + 9 + 12 + 15	5,300	7,900	10,500	12,300
		36,000		5,200	7,800	10,200	12,800
4	42	36,000	6 + 12 + 12 + 12	5,100	10,300	10,300	10,300
		36,000		5,300	10,200	10,200	10,200
4	36	35,400	9 + 9 + 9 + 9	8,900	8,900	8,900	8,900
		36,000		9,000	9,000	9,000	9,000
4	39	36,000	9 + 9 + 9 + 12	8,300	8,300	8,300	11,100
		36,000		8,400	8,400	8,400	10,900
4	42	36,000	9 + 9 + 9 + 15	7,900	7,900	7,900	12,300
		36,000		7,800	7,800	7,800	12,700
4	42	36,000	9 + 9 + 12 + 12	7,700	7,700	10,300	10,300
		36,000		7,800	7,800	10,200	10,200

MXZ-4C36NA2 OPERATIONAL PERFORMANCE, CONTD.

DUCTED:

# of indoor unit	Total Nominal Capacity (x1000 Btu/h)	Total Indoor Unit Capacity (Btu/h)	Operational Performance for Indoor Unit Combinations (Unit A + Unit B + Unit C + Unit D)	Cooling Capacity Range (Btu/h)			
				Heating Capacity Range (Btu/h)			
				Unit A	Unit B	Unit C	Unit D
1	9	9,000	9	9,000	-	-	-
		10,900		10,900	-	-	-
1	12	12,000	12	12,000	-	-	-
		13,600		13,600	-	-	-
1	15	15,000	15	15,000	-	-	-
		18,000		18,000	-	-	-
1	18	17,200	18	17,200	-	-	-
		21,600		21,600	-	-	-
1	24	24,000	24	24,000	-	-	-
		26,000		26,000	-	-	-
2	18	18,000	9 + 9	9,000	9,000	-	-
		21,800		10,900	10,900	-	-
2	21	21,000	9 + 12	9,000	12,000	-	-
		24,500		10,900	13,600	-	-
2	24	24,000	9 + 15	9,000	15,000	-	-
		27,200		10,300	16,900	-	-
2	27	26,200	9 + 18	9,000	17,200	-	-
		28,000		9,400	18,600	-	-
2	33	28,000	9 + 24	7,600	20,400	-	-
		28,000		8,300	19,700	-	-
2	24	24,000	12 + 12	12,000	12,000	-	-
		27,200		13,600	13,600	-	-
2	27	26,200	12 + 15	11,600	14,600	-	-
		28,000		12,100	15,900	-	-
2	30	28,000	12 + 18	11,500	16,500	-	-
		28,000		10,800	17,200	-	-
2	36	28,000	12 + 24	9,300	18,700	-	-
		28,000		9,600	18,400	-	-
2	30	28,000	15 + 15	14,000	14,000	-	-
		28,000		14,000	14,000	-	-
2	33	28,000	15 + 18	13,000	15,000	-	-
		28,000		12,700	15,300	-	-
2	36	28,000	18 + 18	14,000	14,000	-	-
		28,000		14,000	14,000	-	-
3	27	27,000	9 + 9 + 9	9,000	9,000	9,000	-
		32,700		10,900	10,900	10,900	-
3	30	30,000	9 + 9 + 12	9,000	9,000	12,000	-
		32,700		10,100	10,100	12,600	-
3	33	32,000	9 + 9 + 15	8,700	8,700	14,500	-
		32,700		9,000	9,000	14,800	-
3	36	32,000	9 + 9 + 18	8,200	8,200	15,600	-
		32,700		8,200	8,200	16,300	-
3	42	32,000	9 + 9 + 24	6,900	6,900	18,300	-
		32,700		7,500	7,500	17,800	-
3	33	32,000	9 + 12 + 12	8,700	11,600	11,600	-
		32,700		9,400	11,700	11,700	-
3	36	32,000	9 + 12 + 15	8,000	10,700	13,300	-
		32,700		8,400	10,500	13,800	-
3	36	32,000	12 + 12 + 12	10,700	10,700	10,700	-
		32,700		10,900	10,900	10,900	-
3	39	32,000	9 + 12 + 18	7,500	10,100	14,400	-
		32,700		7,700	9,600	15,300	-
3	39	32,000	9 + 15 + 15	7,400	12,300	12,300	-
		32,700		7,600	12,600	12,600	-
3	39	32,000	12 + 12 + 15	9,800	9,800	12,300	-
		32,700		9,800	9,800	13,000	-
3	42	32,000	9 + 15 + 18	7,000	11,700	13,400	-
		32,700		7,100	11,700	14,000	-
3	42	32,000	12 + 12 + 18	9,300	9,300	13,400	-
		32,700		9,100	9,100	14,500	-

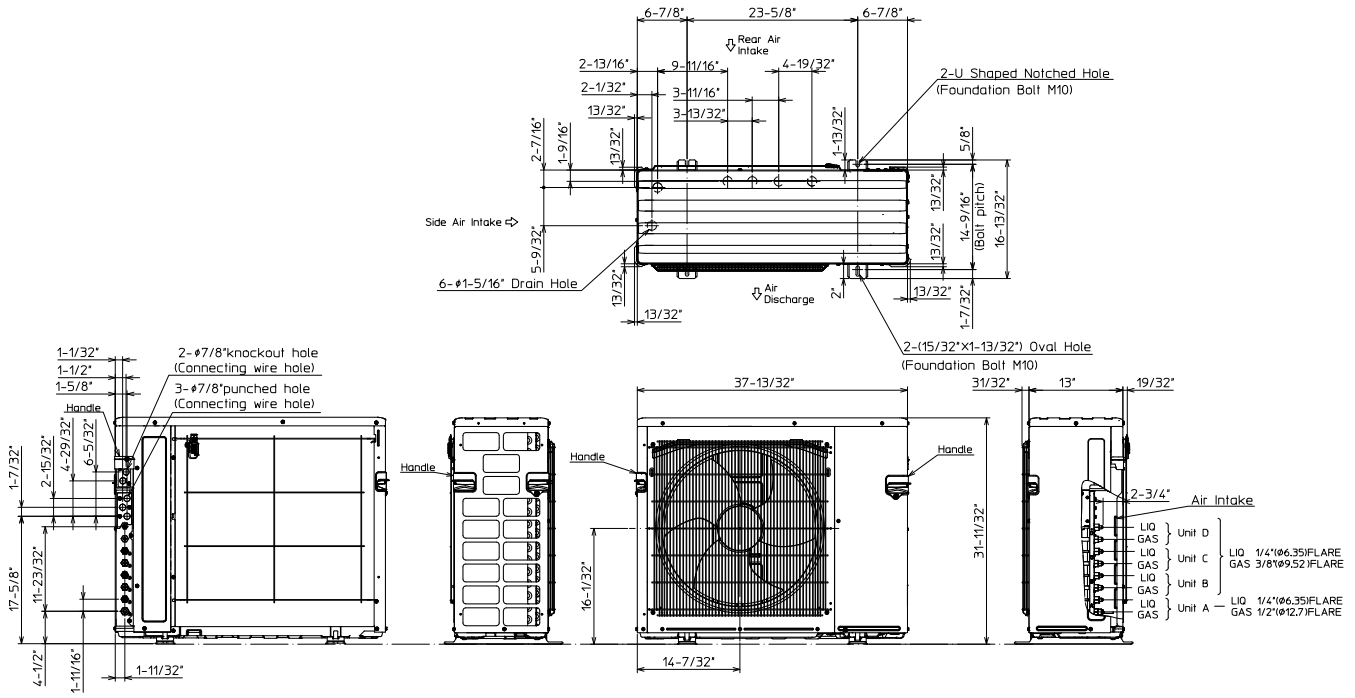
MXZ-4C36NA2 OPERATIONAL PERFORMANCE, CONTD.

DUCTED:

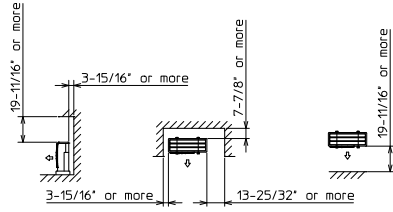
# of indoor unit	Total Nominal Capacity (x1000 Btu/h)	Total Indoor Unit Capacity (Btu/h)	Operational Performance for Indoor Unit Combinations (Unit A + Unit B + Unit C + Unit D)	Cooling Capacity Range (Btu/h)			
				Heating Capacity Range (Btu/h)			
				Unit A	Unit B	Unit C	Unit D
3	42	32,000	12 + 15 + 15	9,100	11,400	11,400	-
		32,700		9,000	11,900	11,900	-
4	36	34,400	9 + 9 + 9 + 9	8,600	8,600	8,600	8,600
		34,400		8,600	8,600	8,600	8,600
4	39	34,800	9 + 9 + 9 + 12	8,000	8,000	8,000	10,700
		34,800		8,200	8,200	8,200	10,200
4	42	35,200	9 + 9 + 9 + 15	7,500	7,500	7,500	12,600
		35,200		7,600	7,600	7,600	12,500
4	42	35,200	9 + 9 + 12 + 12	7,500	7,500	10,100	10,100
		35,200		7,800	7,800	9,800	9,800

DIMENSIONS: MXZ-4C36NA2

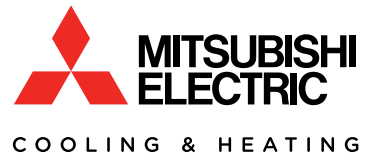
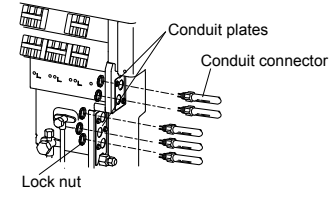
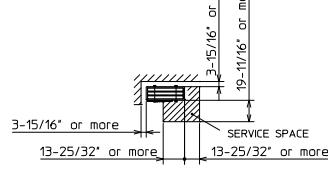
Unit: inch



1.FREE SPACE



2.SERVICE SPACE



1340 Satellite Boulevard, Suwanee, GA 30024
 Toll Free: 800-433-4822 www.mehvac.com

