

## PRODUCT INFORMATION PACKET

**marathon**<sup>®</sup>  
Motors

Model No: 215TTDW16073  
Catalog No: U431A-P  
10,1800,DP,215T,3/60/230/460  
Open Drip Proof (ODP)



Regal and Marathon are trademarks of Regal Beloit Corporation or one of its affiliated companies.  
©2018 Regal Beloit Corporation, All Rights Reserved. MC017097E





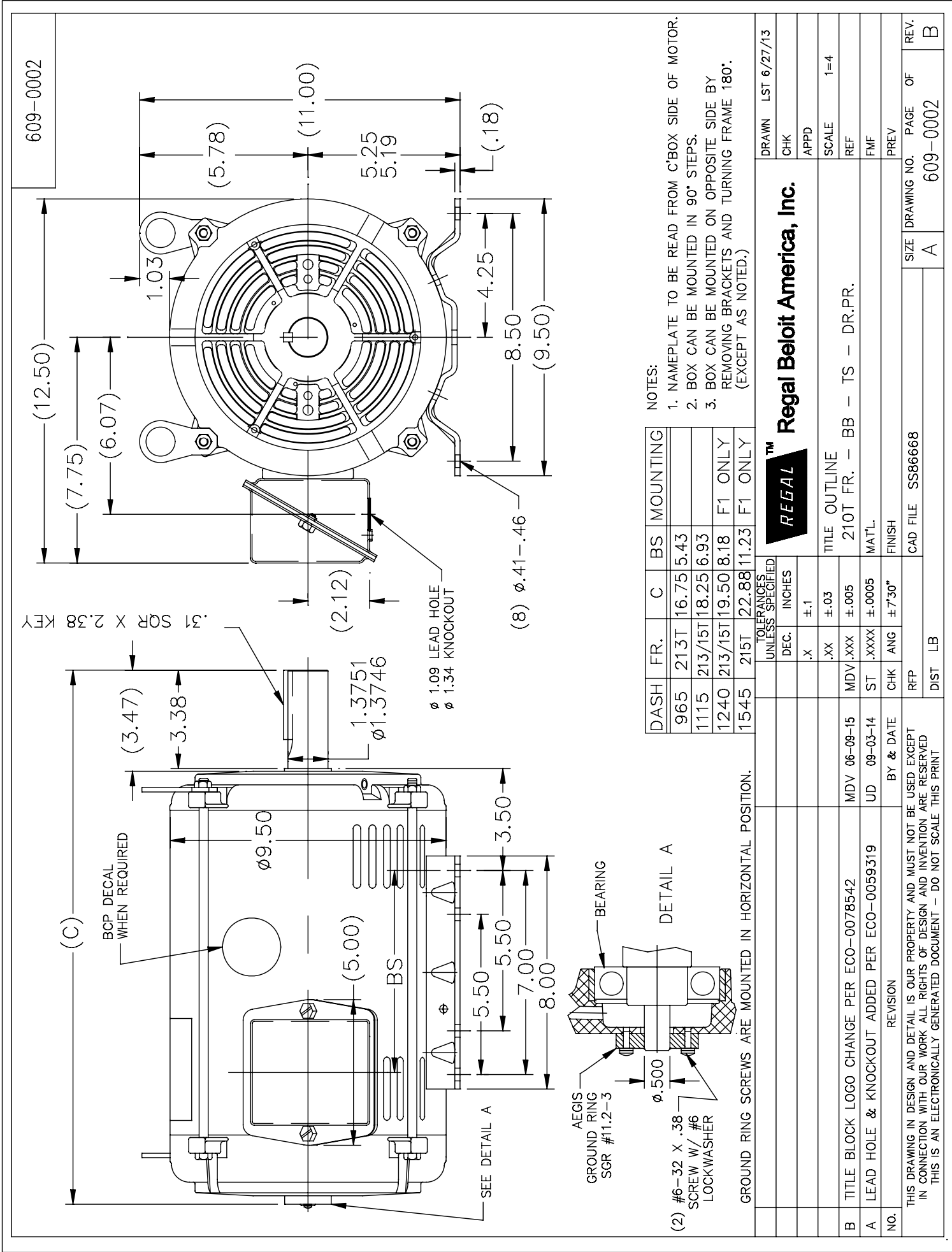
**Nameplate Specifications**

Output HP	10 Hp	Output KW	7.5 kW
Frequency	60 Hz	Voltage	230/460 V
Current	25.0/12.5 A	Speed	1760 rpm
Service Factor	1.15	Phase	3
Efficiency	91.7 %	Duty	Continuous
Insulation Class	F	Design Code	B
KVA Code	G	Frame	215T
Enclosure	Drip Proof	Overload Protector	No
Ambient Temperature	40 °C	Drive End Bearing Size	307
Opp Drive End Bearing Size	206	UL	Recognized
CSA	Y	CE	Y
IP Code	22		

**Technical Specifications**

Electrical Type	Squirrel Cage Inverter Rated	Starting Method	Line Or Inverter
Poles	4	Rotation	Reversible
Mounting	Rigid base	Motor Orientation	Horizontal
Drive End Bearing	Ball	Opp Drive End Bearing	Ball
Frame Material	Rolled Steel	Shaft Type	T
Overall Length	22.15 in	Shaft Diameter	1.375 in
Shaft Extension	3.38 in	Assembly/Box Mounting	F1/F2 Capable
Outline Drawing	609-0002-1240	Connection Diagram	A-EE7308

This is an uncontrolled document once printed or downloaded and is subject to change without notice. Date Created: 06/29/2018



DASH	FR.	C	BS	MOUNTING
965	213T	16.75	5.43	
1115	213/15T	18.25	6.93	
1240	213/15T	19.50	8.18	F1 ONLY
1545	215T	22.88	11.23	F1 ONLY

NOTES:

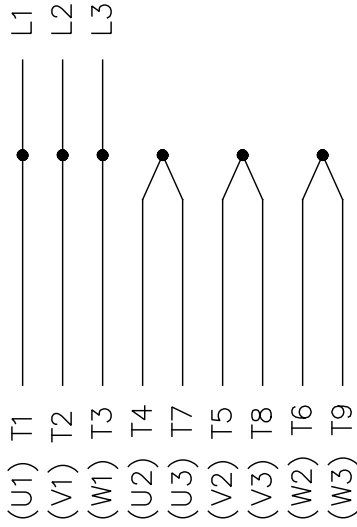
1. NAMEPLATE TO BE READ FROM C'BOX SIDE OF MOTOR.
2. BOX CAN BE MOUNTED IN 90° STEPS.
3. BOX CAN BE MOUNTED ON OPPOSITE SIDE BY REMOVING BRACKETS AND TURNING FRAME 180°. (EXCEPT AS NOTED.)

DRAWN		LST 6/27/13	
CHK			
APPD			
SCALE		1=4	
REF.			
FIMF			
PREV			
<b>REGAL™ Regal Beloit America, Inc.</b>			
TITLE OUTLINE			
210T FR. - BB - TS - DR.PR.			
MATERIAL FINISH			
CAD FILE SS86668			
SIZE		A	
DRAWING NO.		609-0002	
PAGE		OF	
REV.		B	

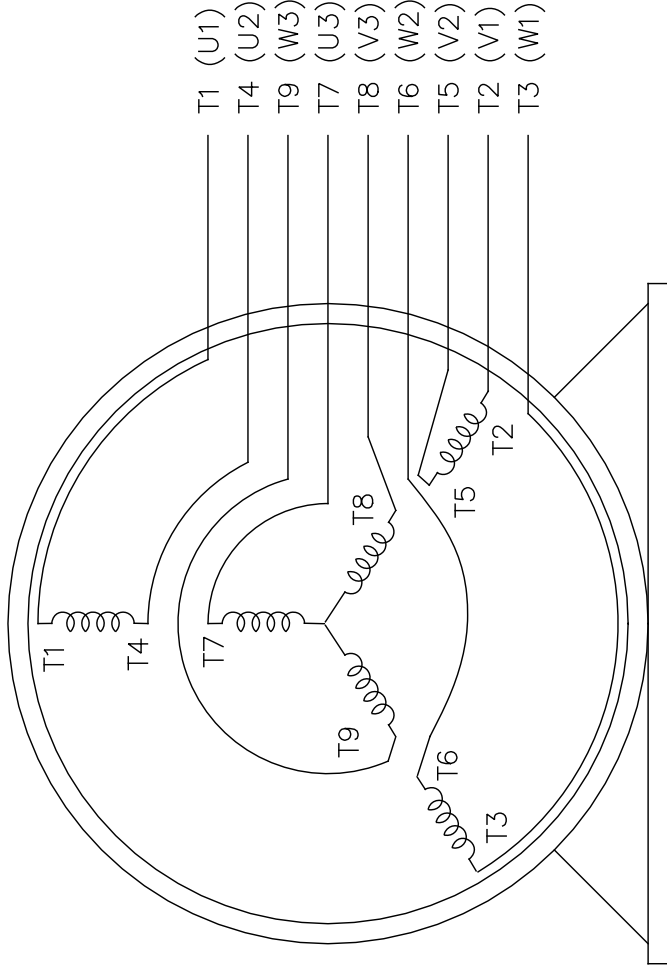
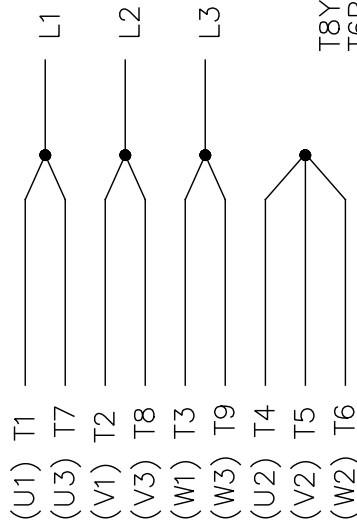
THREE PHASE  
DUAL VOLTAGE MOTOR

EE7308

HIGH VOLTAGE



LOW VOLTAGE



VIEW OF TERMINAL END

OPTIONAL CORD  
CONNECTION

- L1 — WHITE
- L2 — RED
- L3 — BLACK

REF.  
WINDING DIAGRAM

T8Y, T2Y, T2BL, T4BX, T2EC, T2G  
T6BZ, T2B, T6BL, T4AV, T6B, T4B

CHG TO REGAL LOGO		SL	09/10/2015	AB	TOLERANCES UNLESS SPECIFIED		DRAWN RM 11/20/1990	
REVISED IEC NOTATIONS		MSG	11/15/2011	CMN.X	INCHES		CHK	ML 11/21/1990
ADDED IEC NOTATIONS... (U1), (V1) ETC. MU95194		MSG	5/10/2010	MJS.XX	±.1		APPD	SAS 04/24/2003
ADDED THE OPTIONAL CORD CONNECTION MU46318		RDH	04/24/2003	DRS.XXX	±.02		SCALE	1=1
REDRAWN		RM	11/20/1990	.XXXX ±.0005	±.005		REF	
REVISION		BY & DATE		CHK	ANG		FMF	
THIS DRAWING IN DESIGN AND DETAIL IS OUR PROPERTY AND MUST NOT BE USED EXCEPT IN CONNECTION WITH OUR WORK ALL RIGHTS OF DESIGN AND INVENTION ARE RESERVED THIS IS AN ELECTRONICALLY GENERATED DOCUMENT - DO NOT SCALE THIS PRINT		RFP		±7'30"		PREV		
DIST		WP		SIZE		DRAWING NO.		PAGE
				A		EE7308		OF
								REV.
								5



TITLE CONNECTION DIAGRAM  
3φ - DUAL VOLTAGE MOTOR

MAT'L

FINISH

CAD FILE ee7308

CERTIFICATION DATA SHEET

Model#: 215T1DW16073 AA  
 CONN. DIAGRAM: A-EE7308  
 OUTLINE: 609-0002-1240

WINDING#: K2154306 NONE 1  
 ASSEMBLY: F1/F2 CAPABLE

TYPICAL MOTOR PERFORMANCE DATA

HP	KW	SYNC. RPM	F.L. RPM	FRAME	ENCLOSURE	KVA CODE	DESIGN
10&7 1/2	7.50&5.60	1800	1760&1465	215T	DP	G	B
PH	Hz	VOLTS	START TYPE	DUTY	INSL	S.F	AMB°C
3	60/50	230/460/190/380	25/12.5&23.2/11.6	CONTINUOUS	F4	1.15/1.15	40
			INVERTER	S			
FULL LOAD EFF: 91.7&91	3/4 LOAD EFF: 92.4	1/2 LOAD EFF: 92.4	GTD. EFF	ELEC. TYPE	NO LOAD AMPS		
			90.2	SQ. CAGE INV. RATED	10 / 5		
FULL LOAD PF: 81&80	3/4 LOAD PF: 77	1/2 LOAD PF: 67					
F.L. TORQUE	LOCKED ROTOR AMPS	L.R. TORQUE	B.D. TORQUE	F.L. RISE°C			
29.8 LB-FT	152 / 76	63 LB-FT 211	81 LB-FT 272	38			
SOUND PRESSURE @ 3 FT.	SOUND POWER	ROTOR WK'2	SAFE STALL TIME	STARTS / HOUR	APPROX. MOTOR WGT		
66 dBA	76 dBA	1 LB-FT'2	20 SEC.	2	155 LBS.		

\*\*\* SUPPLEMENTAL INFORMATION \*\*\*

DE BRACKET TYPE	ODE BRACKET TYPE	MOUNT TYPE	ORIENTATION	SEVERE DUTY	HAZARDOUS LOCATION	DRIP COVER	SCREENS	PAINT
STANDARD	STANDARD	RIGID	HORIZONTAL	FALSE	NONE	FALSE	NONE	BLUE (ENAMEL)
BEARINGS	GREASE	SHAFT TYPE	SPECIAL DE	SPECIAL ODE	SHAFT MATERIAL	FRAME MATERIAL		
DE BALL 307	OPE BALL 206	POLYREX EM	T	NONE	AISI 1045 (C-240)	ROLLED STEEL		
THERMOSTATS	THERMO-PROTECTORS	WDG RTDs	BRG RTDs	CONTROL	SPACE IN HEATERS			
NONE	NOT	NONE	NONE	NONE	FALSE	NONE VOLTS		

If Inverter equals NONE, contact factory for further information

INVERTER TORQUE: VARIABLE 10:1
INV. HP SPEED RANGE: NONE
ENCODER: NONE
NONE NONE
NONE NONE PPR
BRAKE: NONE NONE
NONE P/N NONE
NONE NONE
NONE FT-LB NONE V NONE HZ

DATE: 06/22/2017 07:24:45 AM  
 FORM 3531 REV.3 02/07/99  
 \*\* Subject to change without notice.