

PRODUCT INFORMATION PACKET

Model No: 213TTDW16075
Catalog No: U430A-P
7.5, 1800, DP, 213T, 3/60/230/460
Open Drip Proof (ODP)



Regal and Marathon are trademarks of Regal Beloit Corporation or one of its affiliated companies.
©2018 Regal Beloit Corporation, All Rights Reserved. MC017097E





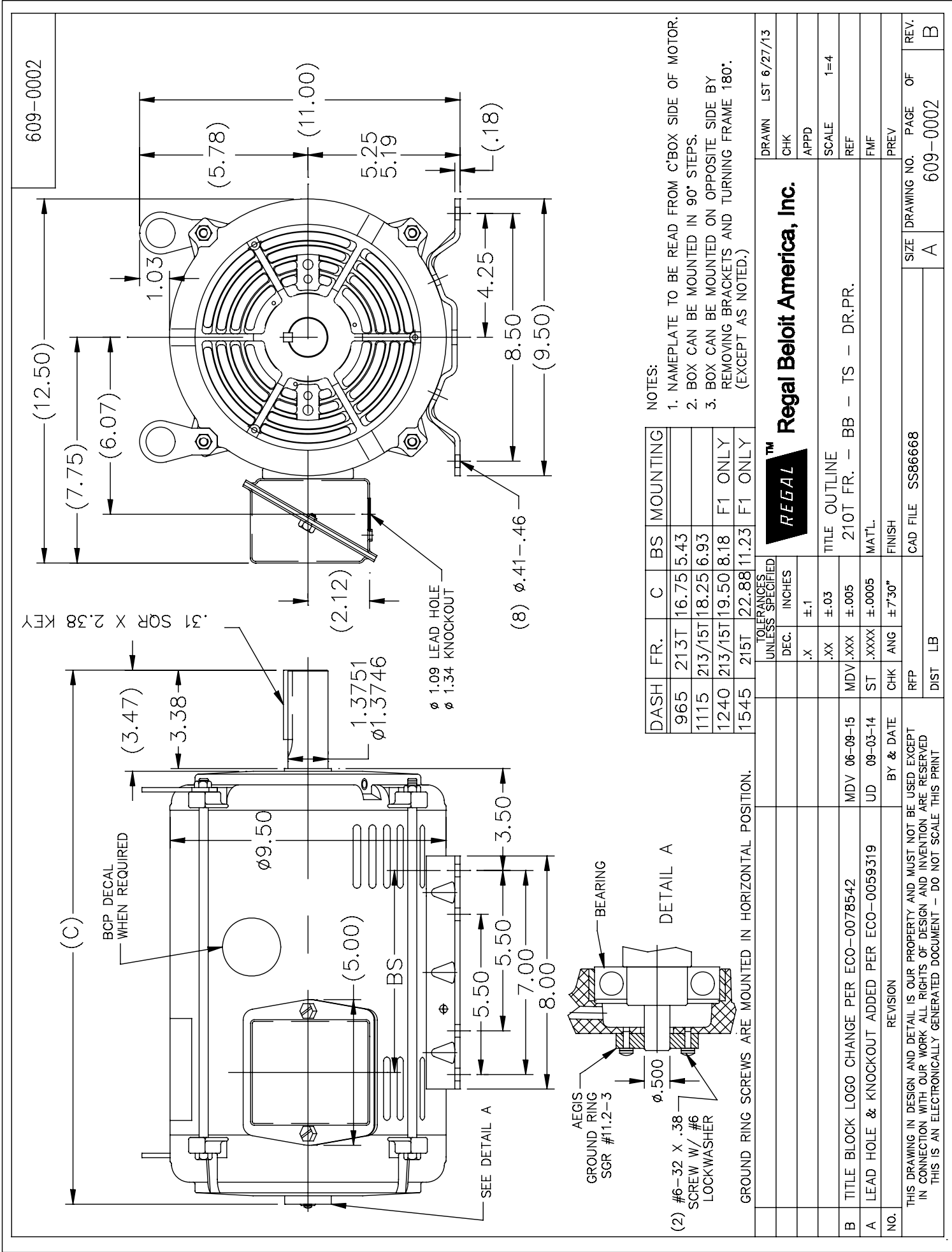
Nameplate Specifications

Output HP	7.50 Hp	Output KW	5.6 kW
Frequency	60 Hz	Voltage	230/460 V
Current	19.2/9.6 A	Speed	1760 rpm
Service Factor	1.15	Phase	3
Efficiency	91 %	Duty	Continuous
Insulation Class	F	Design Code	B
KVA Code	H	Frame	213T
Enclosure	Drip Proof	Overload Protector	No
Ambient Temperature	40 °C	Drive End Bearing Size	307
Opp Drive End Bearing Size	206	UL	Recognized
CSA	Y	CE	Y
IP Code	22		

Technical Specifications

Electrical Type	Squirrel Cage Inverter Rated	Starting Method	Line Or Inverter
Poles	4	Rotation	Reversible
Mounting	Rigid base	Motor Orientation	Horizontal
Drive End Bearing	Ball	Opp Drive End Bearing	Ball
Frame Material	Rolled Steel	Shaft Type	T
Overall Length	19.67 in	Shaft Diameter	1.375 in
Shaft Extension	3.38 in	Assembly/Box Mounting	F1/F2 Capable
Outline Drawing	609-0002-1240	Connection Diagram	A-EE7308

This is an uncontrolled document once printed or downloaded and is subject to change without notice. Date Created: 06/29/2018



NOTES:

1. NAMEPLATE TO BE READ FROM C'BOX SIDE OF MOTOR.
2. BOX CAN BE MOUNTED IN 90° STEPS.
3. BOX CAN BE MOUNTED ON OPPOSITE SIDE BY REMOVING BRACKETS AND TURNING FRAME 180°. (EXCEPT AS NOTED.)

DASH	FR.	C	BS	MOUNTING
965	213T	16.75	5.43	
1115	213/15T	18.25	6.93	
1240	213/15T	19.50	8.18	F1 ONLY
1545	215T	22.88	11.23	F1 ONLY

TOLERANCES UNLESS SPECIFIED		DRAWN LST 6/27/13	
DEC.	INCHES	CHK	APPD
.X	±.1		
.XX	±.03		
MDV .xxx	±.005		
ST .xxxx	±.0005		
CHK ANG	±7'30"		
RFP			
DIST LB			

REGAL™ Regal Beloit America, Inc.

TITLE OUTLINE
210T FR. - BB - TS - DR.PR.

MAT'L.
FINISH

CAD FILE SS86668

SIZE A

DRAWING NO. 609-0002

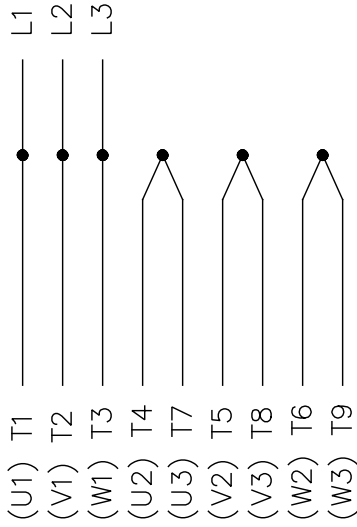
PAGE OF 1

REV. B

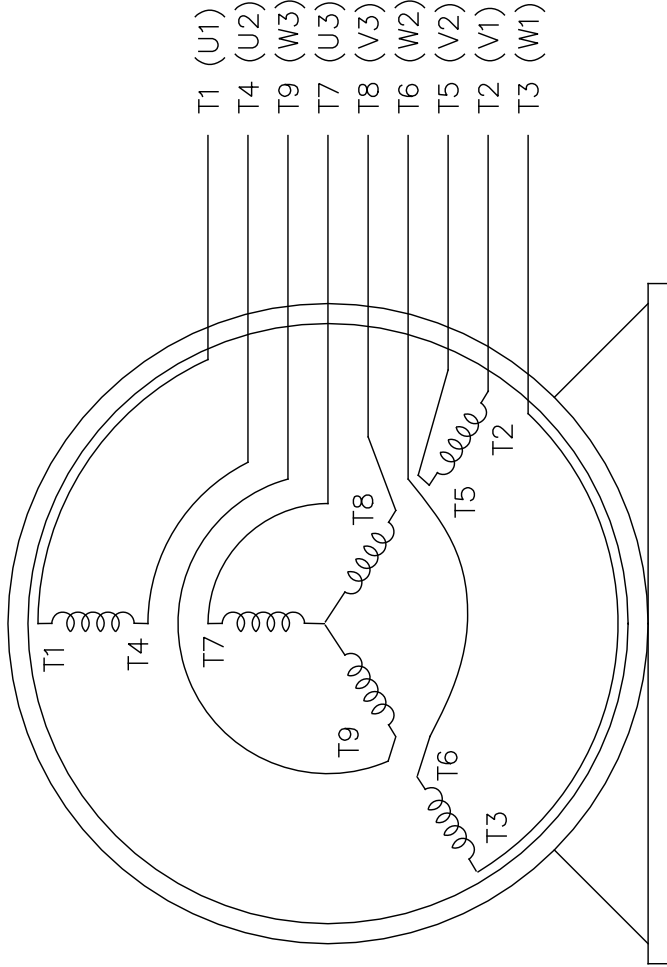
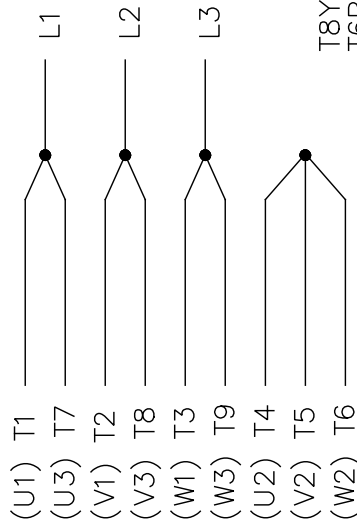
THREE PHASE
DUAL VOLTAGE MOTOR

EE7308

HIGH VOLTAGE



LOW VOLTAGE



VIEW OF TERMINAL END

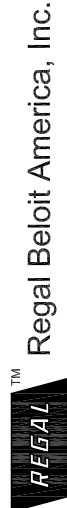
OPTIONAL CORD
CONNECTION

- L1 — WHITE
- L2 — RED
- L3 — BLACK

REF.
WINDING DIAGRAM

T8Y, T2Y, T2BL, T4BX, T2EC, T2G
T6BZ, T2B, T6BL, T4AV, T6B, T4B

5		CHG TO REGAL LOGO	SL	09/10/2015	AB	TOLERANCES UNLESS SPECIFIED		DRAWN RM 11/20/1990	
4		REVISED IEC NOTATIONS	MSG	11/15/2011	CMN.X	INCHES		CHK	ML 11/21/1990
3		ADDED IEC NOTATIONS... (U1), (V1) ETC.	MSG	5/10/2010	MJS.XX	±.1		APPD	SAS 04/24/2003
2		ADDED THE OPTIONAL CORD CONNECTION	RDH	04/24/2003	DRS.XXX	±.02		SCALE	1=1
1		REDRAWN	RM	11/20/1990	.XXXX	±.005		REF	
NO.		REVISION	BY & DATE		CHK	ANG		FMF	
		THIS DRAWING IN DESIGN AND DETAIL IS OUR PROPERTY AND MUST NOT BE USED EXCEPT IN CONNECTION WITH OUR WORK ALL RIGHTS OF DESIGN AND INVENTION ARE RESERVED THIS IS AN ELECTRONICALLY GENERATED DOCUMENT - DO NOT SCALE THIS PRINT		RFP	DIST		WP	PREV	
				CAD FILE		ee7308		SIZE	DRAWING NO. PAGE OF
				A		EE7308		REV.	5



TITLE CONNECTION DIAGRAM
3φ - DUAL VOLTAGE MOTOR

CERTIFICATION DATA SHEET

Model#: 213T1DW16075 AA
 CONN. DIAGRAM: A-EE7308
 OUTLINE: 609-0002-1240

WINDING#: K2134182 NONE 2
 ASSEMBLY: F1/F2 CAPABLE

TYPICAL MOTOR PERFORMANCE DATA

HP	KW	SYNC. RPM	F.L. RPM	FRAME	ENCLOSURE	KVA CODE	DESIGN	
7 1/2&5	5.6&3.70	1800	1760&1470	213T	DP	H	B	
PH	Hz	VOLTS	START TYPE	DUTY	INSL	S.F	AMB°C	ELEVATION
3	60/50	230/460#190/380	LINE OR INVERTER	CONTINUOUS	F4	1.15/1.15	40	3300
FULL LOAD EFF: 91&91	3/4 LOAD EFF: 91	1/2 LOAD EFF: 89.7	GTD. EFF	ELEC. TYPE	NO LOAD AMPS			
FULL LOAD PF: 80&75	3/4 LOAD PF: 75	1/2 LOAD PF: 84.8	89.5	SQ. CAGE INV/RATED	8.2 / 4.1			
F.L. TORQUE	LOCKED ROTOR AMPS	L.R. TORQUE	B.D. TORQUE	F.L. RISE°C				
22.5 LB-FT	127 / 63.5	51 LB-FT 227	66 LB-FT 293	22				
SOUND PRESSURE @ 3 FT.	SOUND POWER	ROTOR WK^2	SAFE STALL TIME	STARTS / HOUR	APPROX. MOTOR WGT			
66 dBA	76 dBA	0.85 LB-FT^2	20 SEC.	2	125 LBS.			

*** SUPPLEMENTAL INFORMATION ***

DE BRACKET TYPE	ODE BRACKET TYPE	MOUNT TYPE	ORIENTATION	SEVERE DUTY	HAZARDOUS LOCATION	DRIP COVER	SCREENS	PAINT
STANDARD	STANDARD	RIGID	HORIZONTAL	FALSE	NONE	FALSE	NONE	BLUE (ENAMEL)
BEARINGS	GREASE	SHAFT TYPE	SPECIAL DE	SPECIAL ODE	SHAFT MATERIAL	FRAME MATERIAL		
DE BALL 307	POLYREX EM 206	T	NONE	NONE	AISI 1045 (C-240)	ROLLED STEEL		
THERMOSTATS	PROTECTORS	WDG RTDs	BRG RTDs	CONTROL	SPACE IN HEATERS			
NONE	NOT	NONE	NONE	NONE	FALSE	NONE VOLTS		

If Inverter equals NONE, contact factory for further information

INVERTER TORQUE: VARIABLE 10:1
INV. HP SPEED RANGE: NONE
ENCODER: NONE
NONE NONE
NONE NONE PPR
BRAKE: NONE NONE
NONE PIN NONE
NONE NONE
NONE FT-LB NONE V NONE HZ

* N O T E S *