

## PRODUCT INFORMATION PACKET

**marathon**<sup>®</sup>  
Motors

Model No: 286TTDBD6026  
Catalog No: GT0067  
30,1800,DP,286T,3/60/230/460  
Open Drip Proof (ODP)



Regal and Marathon are trademarks of Regal Beloit Corporation or one of its affiliated companies.  
©2018 Regal Beloit Corporation, All Rights Reserved. MC017097E

**REGAL**



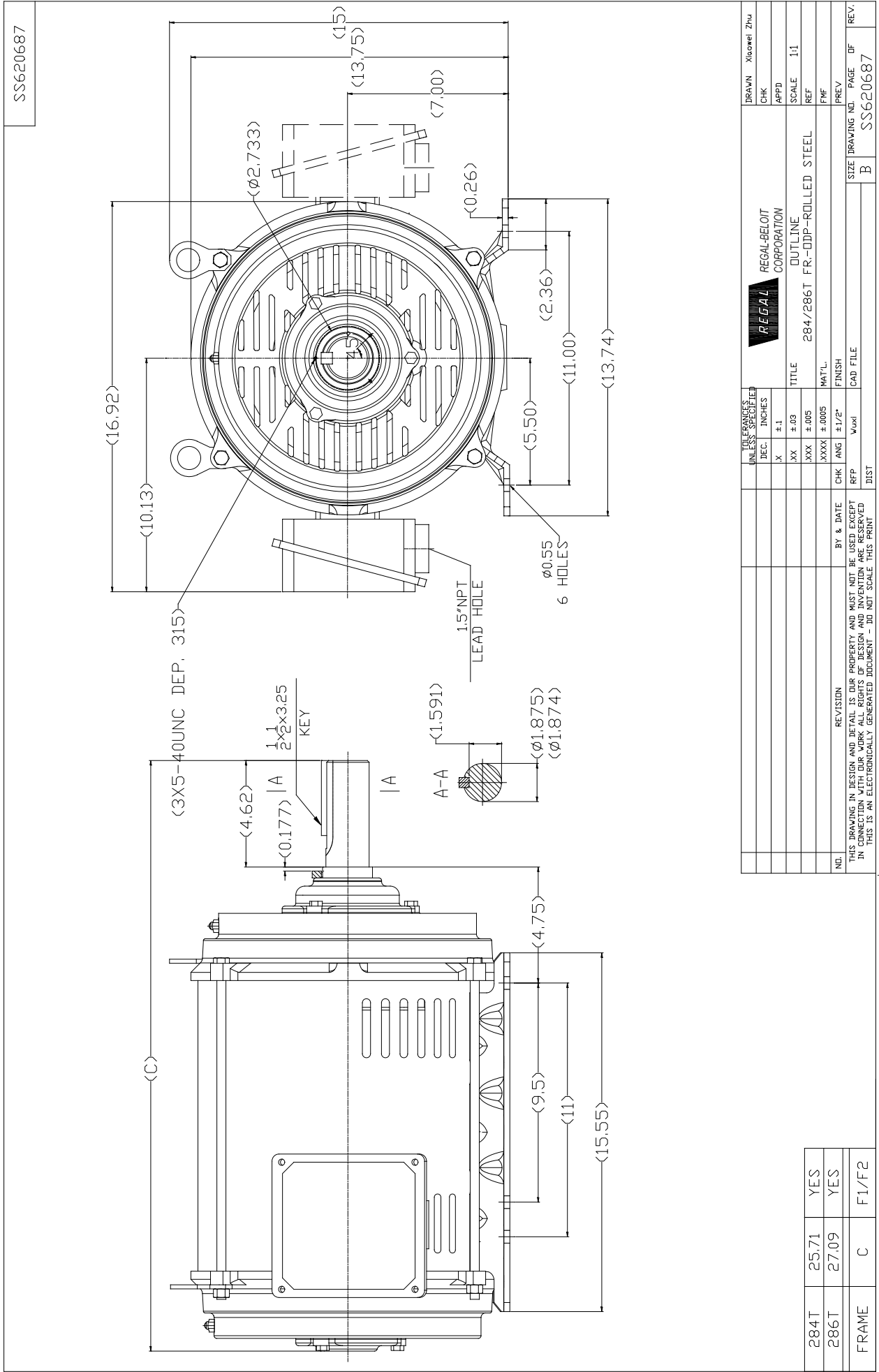
**Nameplate Specifications**

Output HP	30 Hp	Output KW	22.4 kW
Frequency	60 Hz	Voltage	230/460 V
Current	72.5/36.0 A	Speed	1775 rpm
Service Factor	1.15	Phase	3
Efficiency	94.1 %	Duty	Continuous
Insulation Class	F	Design Code	B
KVA Code	G	Frame	286T
Enclosure	Drip Proof	Overload Protector	No
Ambient Temperature	40 °C	Drive End Bearing Size	6311
Opp Drive End Bearing Size	6210	UL	Recognized
CSA	Y	CE	Y
IP Code	22		

**Technical Specifications**

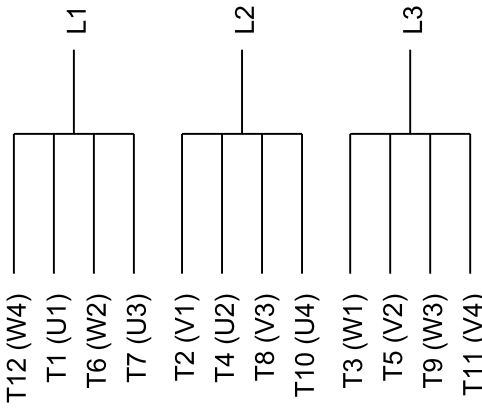
Electrical Type	Squirrel Cage Inverter Rated	Starting Method	Wye Start Delta Run Or Inverter
Poles	4	Rotation	Reversible
Mounting	Rigid base	Motor Orientation	Horizontal
Drive End Bearing	Ball	Opp Drive End Bearing	Ball
Frame Material	Rolled Steel	Shaft Type	T
Overall Length	27.09 in	Shaft Diameter	1.875 in
Shaft Extension	4.62 in	Assembly/Box Mounting	F1/F2 Capable
Outline Drawing	B-SS620687	Connection Diagram	A-EE7308AA

This is an uncontrolled document once printed or downloaded and is subject to change without notice. Date Created: 07/02/2018

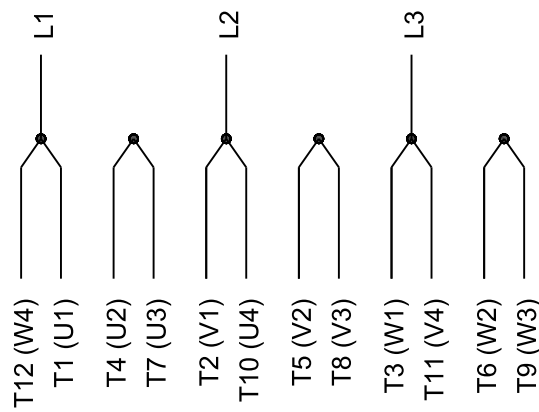


SS620687

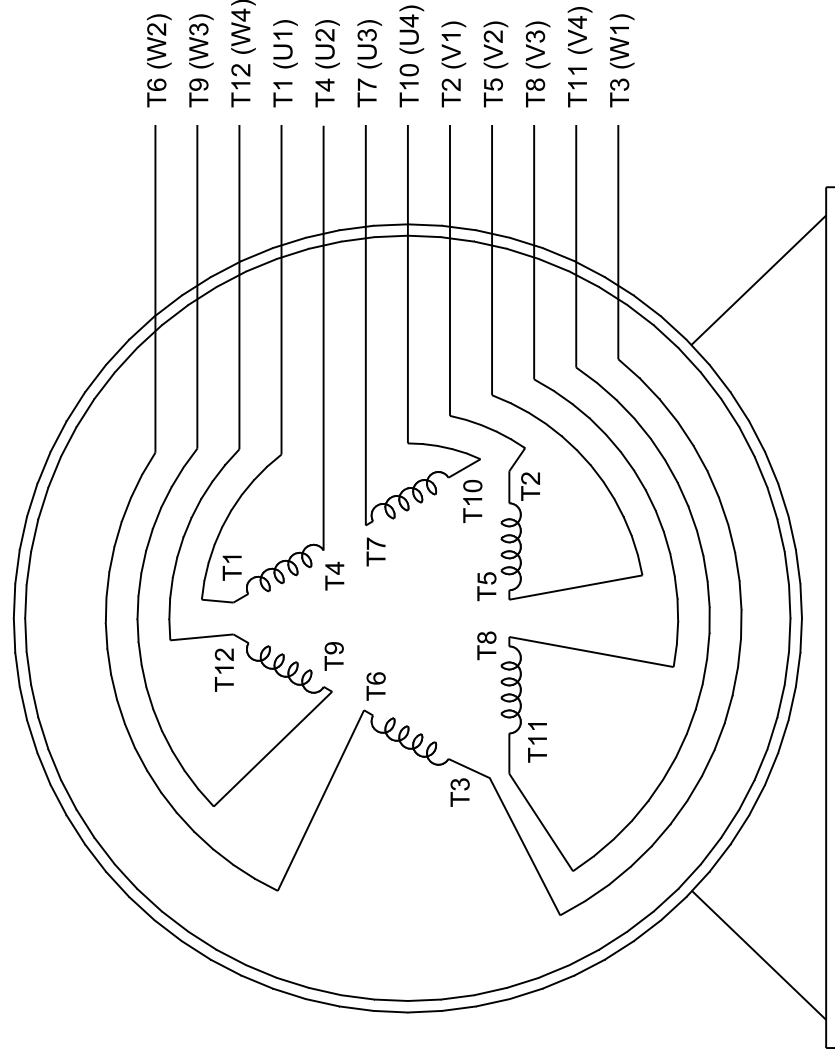
UNLESS SPECIFIED		REGAL		REGAL-BELOIT CORPORATION	
DEC.	INCHES	CHK	X	APPD	SCALE
X	$\pm 1$	X	X	X	1:1
XXX	$\pm 0.03$	XXX	X	XXX	284/286 T FR.-DDP-ROLLED STEEL
XXXX	$\pm 0.005$	XXXX	X	XXXX	MAT'L.
		ANG	X	ANG	FINISH
			X		CAD FILE
			X		PREV
			X		DRAWING NO.
			X		PAGE
			X		OF
			X		REV.
			X		SS620687



**LOW VOLTAGE**



**HIGH VOLTAGE**



**VIEW OF TERMINAL END**

DRAWING REVISION		REVISION BY	DATE	DRAWN BY		DATE		APPROVED BY		DATE		REFERENCE		THIRD ANGLE PROJECTION		SIZE		DRAWING NUMBER		SHEET	
K		AJW	07-17-2015	LZ		01-12-1994		GK		01-14-1994				A		EE7308AA		1 OF 1			
ECO		ECO-0081632		T. VJUE		07-17-2015															
ECO DESCRIPTION		REV'D IEC MARKINGS PER IEC 60034-8		COPYRIGHT REGAL BELOIT AMERICA, INC. ALL RIGHTS RESERVED.		REGAL BELOIT AMERICA, INC. (OWNER) AND CONTAINS OWNERS PROPRIETARY INFORMATION. ANY PERSON, CORPORATION OR OTHER FIRM RECEIVING IT IS DEEMED BY RECEIVING IT TO AGREE THAT IT, AND/OR ANY PART OF IT, SHALL NOT BE DISCLOSED TO ANY PERSON, CORPORATION OR OTHER ENTITY, DUPLICATED, AND/OR USED, EXCEPT AS EXPRESSLY APPROVED IN WRITING IN ADVANCE BY OWNER. THIS DOCUMENT SHALL BE RETURNED TO OWNER UPON REQUEST. IT MAY BE SUBJECT TO CERTAIN RESTRICTIONS UNDER APPLICABLE EXPORT CONTROL LAWS AND REGULATIONS.		REGAL BELOIT AMERICA, Inc.		DESCRIPTION		CONN DIAGRAM-EXTERNAL		3Ø-2/1 DELTA-12 LEADS		MATERIAL		PROCESS/FINISH			

CERTIFICATION DATA SHEET

**Model#:** 286TTDDBD6026 AA      **WINDING#:** HE31804010 NONE 2  
**CONN. DIAGRAM:** A-EE7308AA      **ASSEMBLY:** F1/F2 CAPABLE  
**OUTLINE:** B-SS620687

TYPICAL MOTOR PERFORMANCE DATA

HP	30&25	KW	22.4&18.7	SYNC. RPM	1800	F.L. RPM	1775&1474	FRAME	286T	ENCLOSURE	DP	KVA CODE	G	DESIGN	B		
PH	3	Hz	60/50	VOLTS	230/460/190/380	FL AMPS	72.5/36&73/36	START TYPE	Y	INSL	F7	S.F	1.15/1.15	AMB°C	40	ELEVATION	3300
FULL LOAD EFF:		94.1	94.1&93.3	1/2 LOAD EFF:	93.6	GTD. EFF	93.6	ELEC. TYPE	SQ CAGE INV/RATED	NO LOAD AMPS							
FULL LOAD PF:		83.5&84	83.5&84	1/2 LOAD PF:	79		79			30 / 15							
F.L. TORQUE	88.8 LB-FT	LOCKED ROTOR AMPS	430 / 215	L.R. TORQUE	178 LB-FT 200	B.D. TORQUE	200 LB-FT 225	F.L. RISE°C	40								
SOUND PRESSURE @ 3 FT.	75 dBA	SOUND POWER	85 dBA	ROTOR WK*2	4.8 LB-FT*2	MAX. WK*2	175 LB-FT*2	SAFE STALL TIME	20 SEC.	STARTS / HOUR	2	APPROX. MOTOR WGT	425 LBS.				

\*\*\* SUPPLEMENTAL INFORMATION \*\*\*

DE BRACKET TYPE	STANDARD	ODE BRACKET TYPE	STANDARD	MOUNT TYPE	RIGID	ORIENTATION	HORIZONTAL	SEVERE DUTY	FALSE	HAZARDOUS LOCATION	NONE	DRIP COVER	FALSE	SCREENS	NONE	PAINT	BLUE (ENAMEL)
BEARINGS DE	6311	OPB	6210	GREASE	POLYREX EM	SHAFT TYPE	T	SPECIAL DE	NONE	SPECIAL ODE	NONE	SHAFT MATERIAL	1045 HOT ROLLED (C-204)	FRAME MATERIAL	ROLLED STEEL		
THERMOSTATS	NONE	PROTECTORS	NOT	WDG RTDs	NONE	BRG RTDs	NONE	THERMISTORS	NONE	CONTROL	FALSE	SPACE in HEATERS					

If Inverter equals NONE, contact factory for further information

INVERTER TORQUE:	VARIABLE 10:1
INV. HP SPEED RANGE:	NONE
ENCODER:	NONE
NONE:	NONE
NONE:	NONE PPR
BRAKE:	NONE NONE
NONE:	PIN NONE
NONE:	NONE
NONE FT-LB:	NONE V
NONE HZ:	NONE HZ

\* N O T E S \*

Data Sheet

Date: 6/20/2017

Customer: \_\_\_\_\_

Attention: \_\_\_\_\_

Submitted by: FAREEDA DUDEKULA



286TTDBD6026

Submittal

Data @ 460 V

Motor Load Data

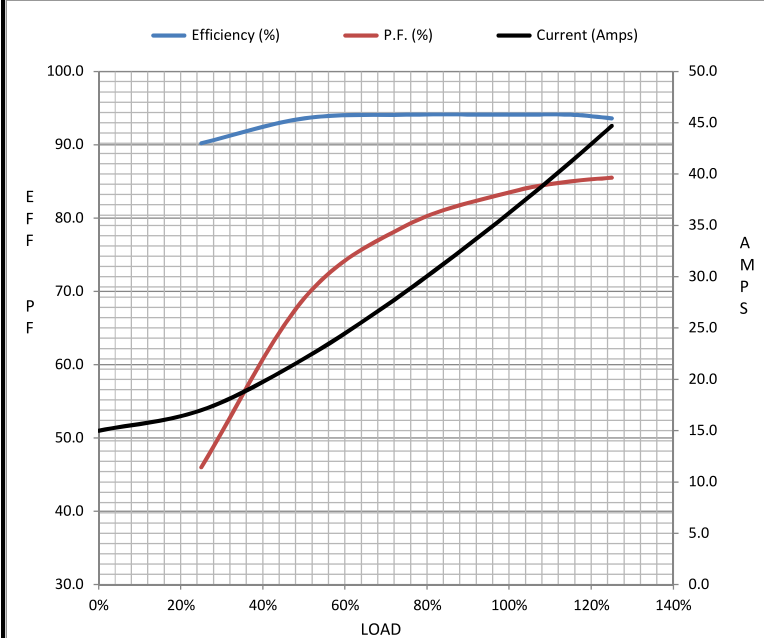
Load	0%	25%	50%	75%	100%	115%	125%	LR
Current (Amps)	15.0	17.0	22.0	28.6	36.2	41.2	44.7	215
Torque (ft-lb)	0.00	22.0	44.0	66.5	88.8	102	111	178
RPM	1800	1795	1788	1780	1775	1,770	1765	0
Efficiency (%)		90.2	93.6	94.1	94.1	94.1	93.6	
P.F. (%)	4.5	46.0	69.0	79.0	83.5	85.0	85.5	38.0

Motor Speed Data

	LR	Pull-Up	BD	Rated	Idle
Speed (RPM)	0	900	1645	1775	1800
Current (Amps)	215	178	130	36.2	15.0
Torque (ft-lb)	178	148	200	88.8	0.00

Information Block

HP	30.0			
Sync. RPM	1800			
Frame	286			
Enclosure	DP			
Construction	TDC			
Voltage	30/460#190/381V			
Frequency	60 Hz			
Design	B			
LR Code letter	G			
Service Factor	1.15			
Temp Rise @ FL	40 °C			
Duty	CONT			
Ambient	40 °C			
Elevation	1,000 feet			
Rotor/Shaft wk <sup>2</sup>	4.8 Lb-Ft <sup>2</sup>			
Ref Wdg	HE31804010 NONE			
Sound Pressure @ 1M	75 dBA			
VFD Rating	VARIABLE 10:1			
Outline Dwg	B-SS620687			
Conn. Diag	A-EE7308AA			
Additional Specifications:				
0				
0				
EQUIV CKT (OHMS / PHASE)				
R1	R2	X1	X2	Xm
0.1800	0.1130	0.7040	0.8980	17.9360



Speed - Torque Curve

