



Air Conditioning & Heating

GSZC16

COOLING CAPACITY: 24,000 - 60,000 BTU/H

HEATING CAPACITY: 24,000 - 60,000 BTU/H

HIGH-EFFICIENCY SPLIT SYSTEM HEAT PUMP UP TO 17 SEER & 9.5 HSPF



Proper sizing and installation of equipment is critical to achieve optimal performance. Split system air conditioners and heat pumps must be matched with appropriate coil components to meet ENERGY STAR® criteria. Ask your contractor for details or visit www.energystar.gov.



Contents

Nomenclature.....	2
Product Specifications.....	3
Expanded Cooling Data.....	4
Expanded Heating Data.....	20
Dimensions.....	22
Wiring Diagram.....	23
Accessories.....	26

Standard Features

- Two-Stage Copeland® UltraTech™ scroll compressor
- High-density foam compressor sound blanket
- Integrated communicating ComfortBridge™ Technology
- Commissioning and diagnostics via indoor board Bluetooth with the CoolCloud™ phone and tablet application
- Expanded ComfortAlert™ diagnostics built in
- Set-up capable with two low-voltage wires to outdoor unit
- Diagnostic indicator lights and storage of six fault codes
- Color-coded terminal strip for non-communicating set-up
- SmartShift® technology to ensure quiet, reliable defrost
- Factory-installed bi-flow liquid-line filter drier
- Factory-installed transformer
- Factory-installed suction-line accumulator
- Factory-installed compressor crankcase heater
- Factory-installed high-capacity muffler
- Factory-installed coil and ambient temperature sensors
- High- and low-pressure switches
- Fully charged for 15' of tubing length
- Two-speed quiet condenser fan motor
- Sweat connection service valves with easy access to gauge ports
- AHRI Certified; ETL Listed

Cabinet Features

- Goodman® brand sound control top design
- Heavy-gauge galvanized-steel cabinet
- Appliance-quality powder-paint finish with 500-hour salt-spray approval
- Wire fan discharge grille
- Steel louver coil guard
- Rust-resistant coated screws
- Compact footprint
- Top and side maintenance access
- Single-panel access to controls with space provided for field-installed accessories
- When properly anchored, meets 2017 Florida Building Code unit integrity requirements for hurricane-type winds (Anchor bracket kits available.)

LIFETIME
COMPRESSOR
LIMITED WARRANTY*

10 UNIT
REPLACEMENT
LIMITED
WARRANTY*

10 PARTS
LIMITED
WARRANTY*

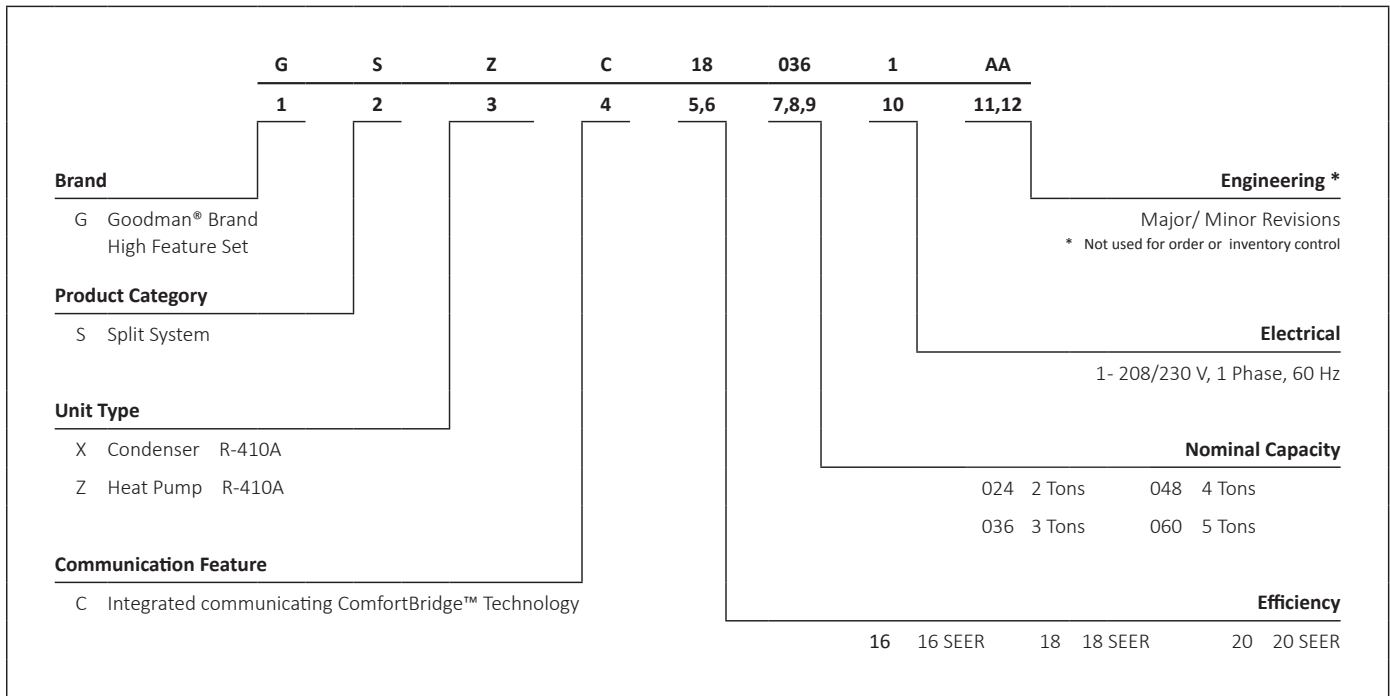






COMPANY WITH
QUALITY SYSTEM
CERTIFIED BY DNV GL
= ISO 9001 =

COMPANY WITH
ENVIRONMENTAL SYSTEM
CERTIFIED BY DNV GL
= ISO 14001 =



* Complete warranty details available from your local dealer or at www.goodmanmfg.com. To receive the Lifetime Compressor Limited Warranty (good for as long as you own your home), 10-Year Unit Limited Warranty, and 10-Year Parts Limited Warranty, online registration must be completed within 60 days of installation. Online registration is not required in California or Québec.



	GSZC16 0241C	GSZC16 0361C	GSZC16 0481C	GSZC16 0601C
CAPACITIES AND RATINGS				
Nominal Cooling (BTU/h)	24,000	36,000	48,000	60,000
Nominal Heating (BTU/h)	24,000	36,000	48,000	60,000
Decibels	73	73	75	75
COMPRESSOR				
RLA	10.0	14.8	20.4	22.9
LRA	62.9	84.2	122.1	147.2
CONDENSER FAN MOTOR				
Horsepower	1/5	1/5	1/5	1/3
FLA	1.0	1.0	1.0	2.8
REFRIGERATION SYSTEM				
Refrigerant Line Size ¹				
Liquid Line Size ("O.D.)	3/8"	3/8"	3/8"	3/8"
Suction Line Size ("O.D.)	3/4"	7/8"	1 1/8"	1 1/8"
Refrigerant Connection Size				
Liquid Valve Size ("O.D.)	3/8"	3/8"	3/8"	3/8"
Suction Valve Size ("O.D.)	3/4"	7/8"	7/8"	7/8"
Valve Connection Type	Sweat	Sweat	Sweat	Sweat
Refrigerant Charge (oz.)	176	170	244	288
Shipped with Orifice Size	NA	NA	NA	NA
ELECTRICAL DATA				
Volts-Hz	208/230-60	208/230-60	208/230-60	208/230-60
Minimum Circuit Ampacity ²	13.5	19.5	26.5	31.4
Max. Overcurrent Protection ³	20	30	45	50
Min / Max Volts	197/253	197/253	197/253	197/253
Power Supply Conduit Size	1/2" or 3/4"	1/2" or 3/4"	1/2" or 3/4"	1/2" or 3/4"
UNIT WEIGHTS				
Equipment Weight	215	240	291	313
Ship Weight (lbs)	240	266	316	339
ENERGY STAR CERTIFIED [^]				
				

[^] Proper sizing and installation of equipment is critical to achieve optimal performance. Split system air conditioners and heat pumps must be matched with appropriate coil components to meet ENERGY STAR[®] criteria. Ask your contractor for details or visit www.energystar.gov. The www.energystar.gov website provides up-to-date system combinations certified to meet ENERGY STAR[®] requirements.

¹ Tested and rated in accordance with AHRI Standard 210/240

² Wire size should be determined in accordance with National Electrical Codes; extensive wire runs will require larger wire sizes

³ Must use time-delay fuses or HACR-type circuit breakers of the same size as noted.

NOTES

- Always check the rating plate for electrical data on the unit being installed.
- Installer will need to supply 3/8" to 1 1/8" adapters for suction line connections.
- Unit is charged with refrigerant for 15' of 3/8" liquid line. System charge must be adjusted per Installation Instructions Final Charge Procedure.
- Installation of these units requires the specified TXV Kit to be installed on the indoor coil.
THE SPECIFIED TXV IS DETERMINED BY THE OUTDOOR UNIT, NOT THE INDOOR COIL.

IDB	AIRFLOW	OUTDOOR AMBIENT TEMPERATURE																							
		65°F				75°F				85°F				95°F				105°F				115°F			
		59	63	67	71	59	63	67	71	59	63	67	71	59	63	67	71	59	63	67	71	59	63	67	71
520	MBh	17.7	18.0	18.5	-	17.6	17.8	18.3	-	17.1	17.4	17.9	-	16.3	16.6	17.1	-	15.4	15.6	16.1	-	14.5	14.7	15.3	-
	S/T	0.66	0.59	0.45	-	0.67	0.60	0.46	-	0.70	0.62	0.48	-	1.00	0.64	0.50	-	1.00	0.66	0.53	-	1.00	0.71	0.58	-
	ΔT	19	17	14	-	19	17	14	-	19	17	14	-	19	17	14	-	19	17	13	-	20	18	15	-
	kW	0.75	0.75	0.75	-	0.84	0.84	0.84	-	0.93	0.93	0.93	-	1.03	1.03	1.03	-	1.15	1.15	1.15	-	1.28	1.28	1.28	-
	Amps	3.3	3.2	3.2	-	3.6	3.6	3.6	-	4.1	4.1	4.1	-	4.5	4.5	4.5	-	5.1	5.1	5.0	-	5.7	5.7	5.7	-
600	Hi PR	188	189	190	-	217	218	219	-	248	249	250	-	281	282	283	-	317	318	319	-	355	356	357	-
	Lo PR	129	130	133	-	136	138	141	-	143	145	148	-	149	150	154	-	154	156	159	-	161	163	166	-
	MBh	18.1	18.3	18.8	-	17.9	18.2	18.7	-	17.5	17.7	18.2	-	16.7	16.9	17.4	-	15.7	16.0	16.5	-	14.8	15.1	15.6	-
	S/T	0.70	0.63	0.49	-	0.71	0.63	0.50	-	1.00	0.66	0.52	-	1.00	0.68	0.54	-	1.00	0.70	0.56	-	1.00	1.00	0.62	-
	ΔT	18	16	13	-	18	16	13	-	18	16	13	-	18	16	12	-	18	16	12	-	19	17	13	-
675	kW	0.76	0.76	0.76	-	0.84	0.84	0.84	-	0.94	0.94	0.93	-	1.04	1.04	1.04	-	1.15	1.15	1.15	-	1.29	1.28	1.28	-
	Amps	3.3	3.3	3.3	-	3.7	3.7	3.6	-	4.1	4.1	4.1	-	4.6	4.6	4.5	-	5.1	5.1	5.1	-	5.7	5.7	5.7	-
	Hi PR	190	191	192	-	219	220	221	-	250	251	252	-	283	284	285	-	319	320	321	-	357	358	359	-
	Lo PR	131	133	136	-	139	140	144	-	146	147	150	-	151	153	156	-	157	159	162	-	164	166	169	-
	MBh	18.5	18.7	19.3	-	18.3	18.6	19.1	-	17.9	18.1	18.6	-	17.1	17.3	17.9	-	16.1	16.4	16.9	-	15.2	15.5	16.0	-

IDB	AIRFLOW	OUTDOOR AMBIENT TEMPERATURE																							
		65°F				75°F				85°F				95°F				105°F				115°F			
		59	63	67	71	59	63	67	71	59	63	67	71	59	63	67	71	59	63	67	71	59	63	67	71
520	MBh	17.7	18.0	18.5	19.3	17.6	17.8	18.4	19.2	17.1	17.4	17.9	18.7	16.3	16.6	17.1	17.9	15.4	15.6	16.1	16.9	14.5	14.7	15.3	16.1
	S/T	0.79	0.72	0.58	0.44	1.00	0.72	0.59	0.45	1.00	0.75	0.61	0.47	1.00	0.77	0.63	0.49	1.00	1.00	0.66	0.51	1.00	1.00	0.71	0.56
	ΔT	23	21	18	14	23	21	18	14	23	22	18	14	23	21	18	14	23	21	18	14	24	22	19	15
	kW	0.75	0.75	0.75	0.76	0.84	0.84	0.84	0.84	0.93	0.93	0.93	0.94	1.03	1.03	1.03	1.04	1.15	1.15	1.14	1.15	1.28	1.28	1.28	1.28
	Amps	3.2	3.2	3.2	3.3	3.6	3.6	3.6	3.7	4.1	4.1	4.1	4.1	4.5	4.5	4.5	4.6	5.1	5.0	5.0	5.1	5.7	5.7	5.7	5.7
600	Hi PR	188	189	190	193	217	218	220	223	248	249	250	254	281	282	283	287	317	318	319	322	355	356	357	361
	Lo PR	129	130	133	139	136	138	141	147	143	145	148	153	149	150	154	159	154	156	159	165	161	163	166	172
	MBh	18.1	18.3	18.9	19.7	17.9	18.2	18.7	19.5	17.5	17.7	18.2	19.0	16.7	16.9	17.5	18.3	15.7	16.0	16.5	17.3	14.8	15.1	15.6	16.4
	S/T	0.83	0.76	0.62	0.48	1.00	0.76	0.63	0.48	1.00	0.79	0.65	0.51	1.00	0.81	0.67	0.53	1.00	1.00	0.69	0.55	1.00	1.00	0.74	0.60
	ΔT	22	20	17	13	22	20	17	13	22	20	17	13	22	20	17	13	22	20	16	13	23	21	18	14
675	kW	0.76	0.76	0.76	0.76	0.84	0.84	0.84	0.85	0.94	0.94	0.93	0.94	1.04	1.04	1.04	1.04	1.15	1.15	1.15	1.16	1.28	1.28	1.28	1.29
	Amps	3.3	3.3	3.3	3.3	3.7	3.7	3.7	3.7	4.1	4.1	4.1	4.1	4.6	4.6	4.6	4.6	5.1	5.1	5.1	5.1	5.7	5.7	5.7	5.7
	Hi PR	190	191	192	195	219	220	221	225	250	251	252	255	283	284	285	289	319	320	321	324	357	358	359	363
	Lo PR	131	133	136	141	139	141	144	149	146	147	150	156	151	153	156	162	157	159	162	167	164	166	169	174
	MBh	18.5	18.7	19.3	20.1	18.3	18.6	19.1	19.9	17.9	18.1	18.6	19.4	17.1	17.3	17.9	18.7	16.1	16.4	16.9	17.7	15.3	15.5	16.0	16.8

IDB: Entering Indoor Dry Bulb Temperature
 High and low pressures are measured at the liquid and suction service valves.
 Shaded area reflects ACCA (TVA) conditions
 kW = Total system power
 Amps = outdoor unit amps (compressor + fan)

IDB		OUTDOOR AMBIENT TEMPERATURE												ENTERING INDOOR WET BULB TEMPERATURE												
		65°F				75°F				85°F				95°F				105°F				115°F				
		59	63	67	71	59	63	67	71	59	63	67	71	59	63	67	71	59	63	67	71	59	63	67	71	
80	520	MBh	17.8	18.1	18.6	19.4	17.7	17.9	18.4	19.2	17.2	17.5	18.0	18.8	16.4	16.7	17.2	18.0	15.5	15.7	16.2	17.0	14.6	14.8	15.4	16.2
		S/T	1.00	0.84	0.71	0.56	1.00	0.85	0.71	0.57	1.00	0.87	0.74	0.60	1.00	1.00	0.76	0.62	1.00	1.00	0.78	0.64	1.00	1.00	0.83	0.69
		ΔT	27	25	22	18	27	25	22	18	28	26	22	19	27	25	22	18	27	25	22	18	28	26	23	19
	kW	0.75	0.75	0.75	0.76	0.84	0.84	0.84	0.84	0.93	0.93	0.93	0.94	1.03	1.03	1.03	1.04	1.15	1.15	1.15	1.15	1.28	1.28	1.28	1.29	
	Amps	3.3	3.2	3.2	3.3	3.6	3.6	3.6	3.7	4.1	4.1	4.1	4.1	4.5	4.5	4.5	4.6	5.1	5.1	5.1	5.1	5.7	5.7	5.7	5.7	
	Hi PR	188	189	190	194	218	219	220	223	249	249	251	254	282	283	284	287	317	318	320	323	356	356	358	361	
	Lo PR	129	131	134	139	137	138	142	147	144	145	148	154	149	151	154	160	155	157	160	165	162	164	167	172	
	MBh	18.2	18.4	18.9	19.7	18.0	18.3	18.8	19.6	17.6	17.8	18.3	19.1	16.8	17.0	17.5	18.3	15.8	16.1	16.6	17.4	14.9	15.2	15.7	16.5	
	S/T	1.00	0.88	0.75	0.60	1.00	0.89	0.75	0.61	1.00	1.00	0.78	0.63	1.00	1.00	0.80	0.65	1.00	1.00	0.82	0.68	1.00	1.00	1.00	0.73	
	ΔT	26	24	21	17	26	24	21	17	26	25	21	17	26	24	21	17	26	24	20	17	27	25	22	18	
	kW	0.76	0.76	0.76	0.76	0.84	0.84	0.84	0.85	0.94	0.94	0.93	0.94	1.04	1.04	1.04	1.04	1.15	1.15	1.15	1.16	1.29	1.28	1.28	1.29	
	Amps	3.3	3.3	3.3	3.3	3.7	3.7	3.6	3.7	4.1	4.1	4.1	4.1	4.6	4.6	4.6	4.6	5.1	5.1	5.1	5.1	5.7	5.7	5.7	5.7	
Hi PR	190	191	192	196	220	220	222	225	250	251	253	256	284	284	286	289	319	320	321	325	357	358	360	363		
Lo PR	132	133	137	142	140	141	144	150	146	148	151	156	152	154	157	162	158	159	162	168	165	166	169	175		
MBh	18.6	18.8	19.4	20.2	18.4	18.7	19.2	20.0	18.0	18.2	18.7	19.5	17.2	17.4	18.0	18.8	16.2	16.5	17.0	17.8	15.3	15.6	16.1	16.9		
S/T	1.00	0.89	0.75	0.61	1.00	0.89	0.76	0.61	1.00	1.00	0.78	0.64	1.00	1.00	0.80	0.66	1.00	1.00	0.82	0.68	1.00	1.00	1.00	0.73		
ΔT	25	23	20	16	25	23	20	16	25	24	20	16	25	23	20	16	25	23	20	16	26	24	21	17		
kW	0.76	0.76	0.76	0.77	0.85	0.84	0.84	0.85	0.94	0.94	0.94	0.94	1.04	1.04	1.04	1.05	1.16	1.15	1.15	1.16	1.29	1.29	1.29	1.29		
Amps	3.3	3.3	3.3	3.3	3.7	3.7	3.7	3.7	4.1	4.1	4.1	4.1	4.6	4.6	4.6	4.6	5.1	5.1	5.1	5.1	5.7	5.7	5.7	5.7		
Hi PR	192	193	194	197	221	222	224	227	252	253	254	258	285	286	288	291	321	322	323	327	359	360	361	365		
Lo PR	135	136	139	145	142	144	147	153	149	151	154	159	155	156	160	165	160	162	165	171	167	169	172	178		
85	520	MBh	18.1	18.4	18.9	19.7	18.0	18.2	18.7	19.5	17.5	17.8	18.3	19.1	16.7	17.0	17.5	18.3	15.8	16.0	16.5	17.3	14.9	15.1	15.7	16.5
		S/T	1.00	0.94	0.81	0.67	1.00	1.00	0.81	0.67	1.00	1.00	0.84	0.70	1.00	1.00	0.86	0.72	1.00	1.00	0.74	0.74	1.00	1.00	1.00	0.79
		ΔT	31	29	26	22	31	29	26	22	31	29	26	22	31	29	26	22	31	29	25	22	32	30	26	23
	kW	0.75	0.75	0.75	0.76	0.84	0.84	0.84	0.84	0.93	0.93	0.93	0.94	1.04	1.03	1.03	1.04	1.15	1.15	1.15	1.15	1.28	1.28	1.28	1.29	
	Amps	3.3	3.3	3.2	3.3	3.6	3.6	3.6	3.7	4.1	4.1	4.1	4.1	4.5	4.5	4.5	4.6	5.1	5.1	5.1	5.1	5.7	5.7	5.7	5.7	
	Hi PR	189	190	191	195	219	219	221	224	249	250	252	255	283	283	285	288	318	319	320	324	356	357	359	362	
	Lo PR	131	133	136	141	139	140	144	149	146	147	150	156	151	153	156	161	157	158	162	167	164	165	169	174	
	MBh	18.5	18.7	19.2	20.0	18.3	18.6	19.1	19.9	17.9	18.1	18.6	19.4	17.1	17.3	17.8	18.6	16.1	16.4	16.9	17.7	15.2	15.5	16.0	16.8	
	S/T	1.00	0.98	0.85	0.70	1.00	1.00	0.85	0.71	1.00	1.00	0.88	0.74	1.00	1.00	1.00	0.76	1.00	1.00	0.78	0.78	1.00	1.00	1.00	0.83	
	ΔT	30	28	24	21	30	28	24	21	30	28	25	21	30	28	24	21	30	28	24	21	31	29	25	22	
	kW	0.76	0.76	0.76	0.76	0.84	0.84	0.84	0.85	0.94	0.94	0.94	0.94	1.04	1.04	1.04	1.04	1.15	1.15	1.15	1.16	1.29	1.29	1.28	1.29	
	Amps	3.3	3.3	3.3	3.3	3.7	3.7	3.7	3.7	4.1	4.1	4.1	4.1	4.6	4.6	4.6	4.6	5.1	5.1	5.1	5.1	5.7	5.7	5.7	5.7	
Hi PR	191	192	193	196	221	221	223	226	251	252	253	257	284	285	287	290	320	321	322	326	358	359	360	364		
Lo PR	134	135	138	144	141	143	146	152	148	150	153	158	154	155	159	164	159	161	164	170	166	168	171	177		
MBh	18.9	19.1	19.6	20.4	18.7	19.0	19.5	20.3	18.3	18.5	19.0	19.8	17.5	17.7	18.2	19.0	16.5	16.8	17.3	18.1	15.6	15.9	16.4	17.2		
S/T	1.00	1.00	0.85	0.71	1.00	1.00	0.86	0.72	1.00	1.00	0.88	0.74	1.00	1.00	1.00	0.76	1.00	1.00	0.78	0.78	1.00	1.00	1.00	0.83		
ΔT	29	27	24	20	29	27	23	20	29	27	24	20	29	27	23	20	29	27	23	20	30	28	24	21		
kW	0.76	0.76	0.76	0.77	0.85	0.85	0.85	0.85	0.94	0.94	0.94	0.95	1.04	1.04	1.04	1.05	1.16	1.16	1.16	1.16	1.29	1.29	1.29	1.29		
Amps	3.3	3.3	3.3	3.3	3.7	3.7	3.7	3.7	4.1	4.1	4.1	4.1	4.6	4.6	4.6	4.6	5.1	5.1	5.1	5.1	5.7	5.7	5.7	5.7		
Hi PR	193	194	195	198	222	223	224	228	253	254	255	259	286	287	288	292	322	323	324	327	360	361	362	366		
Lo PR	137	138	141	147	144	146	149	154	151	153	156	161	157	158	161	167	162	164	167	173	169	171	174	180		

IDB: Entering Indoor Dry Bulb Temperature
 High and low pressures are measured at the liquid and suction service valves.
 Shaded area reflects AHRI (TVA) conditions
 kW = Total system power
 Amps = outdoor unit amps (compressor + fan)

EXPANDED COOLING DATA — GSZC160241C* / CA*F3137*6A*+MBVC1200**-.1A*+TX — HIGH STAGE

IDB	AIRFLOW	OUTDOOR AMBIENT TEMPERATURE																							
		65°F				75°F				85°F				95°F				105°F				115°F			
		59	63	67	71	59	63	67	71	59	63	67	71	59	63	67	71	59	63	67	71	59	63	67	71
70	MBh	23.8	24.1	24.8	-	23.6	23.9	24.6	-	23.0	23.3	24.0	-	21.9	22.2	22.9	-	20.6	20.9	21.6	-	19.3	19.7	20.4	-
	S/T	0.58	0.50	0.35	-	0.59	0.51	0.36	-	1.00	0.54	0.39	-	1.00	0.56	0.41	-	1.00	0.58	0.43	-	1.00	1.00	0.49	-
	ΔT	20	18	15	-	20	18	15	-	20	18	15	-	20	18	15	-	20	18	15	-	21	19	16	-
	kW	1.30	1.30	1.29	-	1.45	1.45	1.45	-	1.63	1.63	1.63	-	1.82	1.82	1.81	-	2.03	2.03	2.02	-	2.28	2.27	2.27	-
	Amps	5.3	5.3	5.3	-	6.0	6.0	6.0	-	6.8	6.8	6.8	-	7.7	7.7	7.7	-	8.6	8.6	8.6	-	9.8	9.8	9.8	-
	Hi PR	237	238	240	-	275	276	278	-	315	316	317	-	357	358	360	-	403	404	406	-	452	453	455	-
Lo PR	129	131	134	-	137	139	142	-	144	146	149	-	150	152	155	-	156	158	161	-	163	165	168	-	
800	MBh	24.0	24.4	25.1	-	23.8	24.2	24.9	-	23.2	23.5	24.2	-	22.1	22.5	23.2	-	20.8	21.1	21.9	-	19.6	19.9	20.6	-
	S/T	0.67	0.59	0.44	-	0.68	0.59	0.44	-	1.00	0.62	0.47	-	1.00	0.64	0.49	-	1.00	0.67	0.52	-	1.00	1.00	0.57	-
	ΔT	19	17	14	-	19	17	14	-	19	17	14	-	19	17	14	-	18	17	13	-	20	18	15	-
	kW	1.31	1.31	1.30	-	1.46	1.46	1.46	-	1.64	1.64	1.63	-	1.83	1.82	1.82	-	2.04	2.04	2.03	-	2.28	2.28	2.28	-
	Amps	5.3	5.3	5.3	-	6.1	6.1	6.0	-	6.9	6.8	6.8	-	7.7	7.7	7.7	-	8.7	8.7	8.7	-	9.8	9.8	9.8	-
	Hi PR	239	240	242	-	277	278	280	-	316	318	319	-	359	360	362	-	405	406	408	-	454	455	457	-
Lo PR	131	133	136	-	139	140	144	-	146	147	151	-	152	153	157	-	158	159	162	-	165	166	170	-	
904	MBh	24.3	24.7	25.4	-	24.1	24.4	25.2	-	23.5	23.8	24.5	-	22.4	22.7	23.5	-	21.1	21.4	22.1	-	19.9	20.2	20.9	-
	S/T	0.73	0.64	0.50	-	0.73	0.65	0.50	-	1.00	0.68	0.53	-	1.00	0.70	0.55	-	1.00	0.72	0.58	-	1.00	1.00	0.63	-
	ΔT	18	16	13	-	18	16	13	-	18	16	13	-	18	16	13	-	17	16	12	-	19	17	14	-
	kW	1.31	1.31	1.31	-	1.47	1.47	1.47	-	1.65	1.64	1.64	-	1.83	1.83	1.83	-	2.04	2.04	2.04	-	2.29	2.29	2.29	-
	Amps	5.4	5.4	5.4	-	6.1	6.1	6.1	-	6.9	6.9	6.9	-	7.8	7.7	7.7	-	8.7	8.7	8.7	-	9.8	9.8	9.8	-
	Hi PR	241	242	244	-	279	280	282	-	318	319	321	-	361	362	364	-	407	408	409	-	456	457	458	-
Lo PR	133	134	138	-	141	142	146	-	148	149	153	-	154	155	158	-	159	161	164	-	167	168	171	-	

IDB	AIRFLOW	OUTDOOR AMBIENT TEMPERATURE																							
		65°F				75°F				85°F				95°F				105°F				115°F			
		59	63	67	71	59	63	67	71	59	63	67	71	59	63	67	71	59	63	67	71	59	63	67	71
70	MBh	23.8	24.1	24.9	26.0	23.6	23.9	24.6	25.7	23.0	23.3	24.0	25.1	21.9	22.2	22.9	24.0	20.6	20.9	21.6	22.7	19.4	19.7	20.4	21.5
	S/T	0.73	0.64	0.49	0.34	1.00	0.65	0.50	0.34	1.00	0.68	0.53	0.37	1.00	0.70	0.55	0.39	1.00	1.00	0.57	0.42	1.00	1.00	0.63	0.47
	ΔT	24	22	19	15	24	22	19	15	24	22	19	16	24	22	19	15	23	22	18	15	24	23	19	16
	kW	1.30	1.30	1.29	1.31	1.45	1.45	1.45	1.46	1.63	1.63	1.62	1.64	1.82	1.82	1.81	1.82	2.03	2.03	2.02	2.04	2.27	2.27	2.27	2.28
	Amps	5.3	5.3	5.3	5.3	6.0	6.0	6.0	6.0	6.8	6.8	6.8	6.8	7.7	7.7	7.7	7.7	8.6	8.6	8.6	8.7	9.8	9.8	9.7	9.8
	Hi PR	237	239	240	244	275	276	278	282	315	316	317	322	357	358	360	364	403	404	406	410	452	453	455	458
Lo PR	129	131	134	140	137	139	142	148	144	146	149	155	150	152	155	161	156	158	161	166	163	165	168	174	
75	MBh	24.0	24.4	25.1	26.2	23.8	24.2	24.9	26.0	23.2	23.5	24.3	25.4	22.1	22.5	23.2	24.3	20.8	21.1	21.9	23.0	19.6	19.9	20.7	21.8
	S/T	0.81	0.73	0.58	0.42	1.00	0.73	0.59	0.43	1.00	0.76	0.61	0.46	1.00	0.78	0.63	0.48	1.00	1.00	0.66	0.50	1.00	1.00	0.71	0.56
	ΔT	23	21	18	14	23	21	18	14	23	21	18	14	22	21	17	14	22	21	17	14	23	22	18	15
	kW	1.31	1.31	1.30	1.31	1.46	1.46	1.46	1.47	1.64	1.64	1.63	1.64	1.83	1.82	1.82	1.83	2.04	2.03	2.03	2.04	2.28	2.28	2.28	2.29
	Amps	5.3	5.3	5.3	5.4	6.1	6.0	6.0	6.1	6.8	6.8	6.8	6.9	7.7	7.7	7.7	7.7	8.7	8.7	8.7	8.7	9.8	9.8	9.8	9.8
	Hi PR	239	240	242	246	277	278	280	284	317	318	319	324	359	360	362	366	405	406	408	412	454	455	457	461
Lo PR	131	133	136	141	139	141	144	149	146	147	151	156	152	153	157	162	158	159	162	168	165	166	170	175	
904	MBh	24.3	24.7	25.4	26.5	24.1	24.5	25.2	26.3	23.5	23.8	24.6	25.6	22.4	22.8	23.5	24.6	21.1	21.4	22.2	23.3	19.9	20.2	21.0	22.0
	S/T	0.87	0.79	0.64	0.48	1.00	0.79	0.64	0.49	1.00	0.82	0.67	0.52	1.00	1.00	0.69	0.54	1.00	1.00	0.72	0.56	1.00	1.00	0.77	0.62
	ΔT	22	20	17	13	22	20	17	13	22	20	17	13	22	20	17	13	21	20	16	13	22	21	17	14
	kW	1.31	1.31	1.31	1.32	1.47	1.47	1.47	1.48	1.64	1.64	1.64	1.65	1.83	1.83	1.83	1.84	2.04	2.04	2.04	2.05	2.29	2.29	2.29	2.30
	Amps	5.4	5.4	5.4	5.4	6.1	6.1	6.1	6.1	6.9	6.9	6.9	6.9	7.7	7.7	7.7	7.8	8.7	8.7	8.7	8.7	9.8	9.8	9.8	9.9
	Hi PR	241	242	244	248	279	280	282	286	319	320	321	325	361	362	364	368	407	408	410	414	456	457	459	463
Lo PR	133	134	138	143	141	142	146	151	148	149	153	158	154	155	158	164	159	161	164	170	167	168	172	177	

IDB: Entering Indoor Dry Bulb Temperature
 High and low pressures are measured at the liquid and suction service valves.
 Shaded area reflects ACCA (TVA) conditions
 kW = Total system power
 Amps = outdoor unit amps (compressor + fan)

EXPANDED COOLING DATA — GSZC160241C* / CA*F3137*6A*+MBVC1200**-.1A*+TX — HIGH STAGE

IDB		OUTDOOR AMBIENT TEMPERATURE												115°F																																							
		65°F						75°F						85°F						95°F						105°F																											
		59	63	67	71	75	79	59	63	67	71	75	79	59	63	67	71	75	79	59	63	67	71	75	79	59	63	67	71	75	79																						
		ENTERING INDOOR WET BULB TEMPERATURE																																																			
		AIRFLOW																																																			
80	700	MBh	23.9	24.3	25.0	26.1	23.7	24.1	24.8	25.9	23.1	23.4	24.1	25.2	22.0	22.3	23.1	24.2	20.7	21.0	21.7	22.8	19.5	19.8	20.5	21.6	20.7	21.0	21.7	22.8	19.5	19.8	20.5	21.6	20.7	21.0	21.7	22.8	19.5	19.8	20.5	21.6	20.7	21.0	21.7	22.8	19.5	19.8	20.5	21.6			
		S/T	1.00	0.78	0.63	0.47	1.00	0.79	0.64	0.48	1.00	1.00	0.67	0.51	1.00	1.00	0.69	0.53	1.00	1.00	0.71	0.55	1.00	1.00	0.71	0.55	1.00	1.00	0.71	0.55	1.00	1.00	0.71	0.55	1.00	1.00	0.71	0.55	1.00	1.00	0.71	0.55	1.00	1.00	0.71	0.55	1.00	1.00	0.71	0.55			
		ΔT	28	26	23	19	27	26	22	19	28	26	23	19	27	26	22	19	27	25	22	19	28	27	23	20	27	25	22	19	28	27	23	20	27	25	22	19	28	27	23	20	27	25	22	19	28	27	23	20			
		kW	1.30	1.30	1.29	1.31	1.45	1.45	1.45	1.46	1.63	1.63	1.62	1.64	1.82	1.82	1.81	1.83	2.03	2.03	2.02	2.04	2.28	2.27	2.27	2.28	2.03	2.03	2.02	2.04	2.28	2.27	2.27	2.28	2.03	2.03	2.02	2.04	2.28	2.27	2.27	2.28	2.03	2.03	2.02	2.04	2.28	2.27	2.27	2.28			
		Amps	5.3	5.3	5.3	5.3	6.0	6.0	6.0	6.1	6.8	6.8	6.8	6.9	7.7	7.7	7.7	7.7	8.6	8.6	8.6	8.7	9.8	9.8	9.8	9.8	8.6	8.6	8.6	8.7	9.8	9.8	9.8	9.8	8.6	8.6	8.6	8.7	9.8	9.8	9.8	9.8	8.6	8.6	8.6	8.7	9.8	9.8	9.8	9.8			
	Hi PR	238	239	241	245	276	277	278	283	315	316	318	322	358	359	360	365	404	405	406	410	453	454	455	459	365	404	405	406	410	453	454	455	459	365	404	405	406	410	453	454	455	459	365	404	405	406	410	453	454	455	459	
	Lo PR	130	132	135	140	138	139	143	148	145	146	150	155	151	152	156	161	156	158	161	167	164	165	169	174	156	158	161	167	164	165	169	174	156	158	161	167	164	165	169	174	156	158	161	167	164	165	169	174				
80		MBh	24.2	24.5	25.2	26.3	24.0	24.3	25.0	26.1	23.3	23.7	24.4	25.5	22.3	22.6	23.3	24.4	20.9	21.3	22.0	23.1	19.7	20.1	20.8	21.9	20.9	21.3	22.0	23.1	19.7	20.1	20.8	21.9	20.9	21.3	22.0	23.1	19.7	20.1	20.8	21.9	20.9	21.3	22.0	23.1	19.7	20.1	20.8	21.9			
		S/T	1.00	0.86	0.72	0.56	1.00	0.87	0.72	0.57	1.00	1.00	0.75	0.59	1.00	1.00	0.77	0.61	1.00	1.00	0.80	0.64	1.00	1.00	0.80	0.70	0.61	1.00	0.80	0.64	1.00	1.00	0.80	0.70	0.61	1.00	0.80	0.64	1.00	1.00	0.80	0.70	0.61	1.00	0.80	0.64	1.00	1.00	0.80	0.70			
		ΔT	26	25	21	18	26	25	21	18	27	25	22	18	26	25	21	18	26	24	21	18	27	25	22	19	18	26	24	21	18	27	25	22	19	18	26	24	21	18	27	25	22	19	18	26	24	21	18	27	25	22	19
		kW	1.31	1.31	1.30	1.32	1.46	1.46	1.46	1.47	1.64	1.64	1.63	1.65	1.83	1.83	1.82	1.83	2.04	2.04	2.03	2.04	2.28	2.28	2.28	2.29	1.83	2.04	2.03	2.04	2.28	2.28	2.28	2.29	1.83	2.04	2.03	2.04	2.28	2.28	2.28	2.29	1.83	2.04	2.03	2.04	2.28	2.28	2.28	2.29			
		Amps	5.3	5.3	5.3	5.4	6.1	6.1	6.0	6.1	6.9	6.8	6.8	6.9	7.7	7.7	7.7	7.8	8.7	8.7	8.7	8.7	9.8	9.8	9.8	9.8	7.7	8.7	8.7	8.7	9.8	9.8	9.8	9.8	7.7	8.7	8.7	8.7	9.8	9.8	9.8	9.8	7.7	8.7	8.7	8.7	9.8	9.8	9.8	9.8			
	Hi PR	240	241	243	247	278	279	280	284	317	318	320	324	360	361	362	367	406	407	408	412	455	456	457	461	367	406	407	408	412	455	456	457	461	367	406	407	408	412	455	456	457	461	367	406	407	408	412	455	456	457	461	
	Lo PR	132	133	136	142	139	141	144	150	146	148	151	157	152	154	157	163	158	160	163	169	165	167	170	176	157	158	163	169	165	167	170	176	157	158	163	169	165	167	170	176	157	158	163	169	165	167	170	176				
904		MBh	24.5	24.8	25.5	26.6	24.2	24.6	25.3	26.4	23.6	24.0	24.7	25.8	22.5	22.9	23.6	24.7	21.2	21.6	22.3	23.4	20.0	20.4	21.1	22.2	21.2	21.6	22.3	23.4	20.0	20.4	21.1	22.2	21.2	21.6	22.3	23.4	20.0	20.4	21.1	22.2	21.2	21.6	22.3	23.4	20.0	20.4	21.1	22.2			
		S/T	1.00	0.92	0.77	0.62	1.00	0.93	0.78	0.63	1.00	1.00	0.81	0.65	1.00	1.00	0.83	0.67	1.00	1.00	0.85	0.70	1.00	1.00	0.85	0.75	0.67	1.00	0.85	0.70	1.00	1.00	0.85	0.75	0.67	1.00	0.85	0.70	1.00	1.00	0.85	0.75	0.67	1.00	0.85	0.70	1.00	1.00	0.85	0.75			
		ΔT	25	24	20	17	25	24	20	17	26	24	21	17	25	24	20	17	25	23	20	17	26	24	21	18	17	25	23	20	17	26	24	21	18	17	25	23	20	17	26	24	21	18	17	25	23	20	17	26	24	21	18
		kW	1.31	1.31	1.31	1.32	1.47	1.47	1.47	1.48	1.64	1.64	1.64	1.65	1.83	1.83	1.83	1.84	2.04	2.04	2.04	2.05	2.29	2.29	2.29	2.30	1.84	2.04	2.04	2.05	2.29	2.29	2.29	2.30	1.84	2.04	2.04	2.05	2.29	2.29	2.29	2.30	1.84	2.04	2.04	2.05	2.29	2.29	2.29	2.30			
		Amps	5.4	5.4	5.4	5.4	6.1	6.1	6.1	6.1	6.9	6.9	6.9	6.9	7.7	7.7	7.7	7.8	8.7	8.7	8.7	8.8	9.8	9.8	9.8	9.9	7.7	8.7	8.7	8.7	9.8	9.8	9.8	9.9	7.7	8.7	8.7	8.7	9.8	9.8	9.8	9.9	7.7	8.7	8.7	8.7	9.8	9.8	9.8	9.9			
	Hi PR	242	243	244	249	279	281	282	286	319	320	322	326	362	363	364	368	407	408	410	414	456	457	459	463	368	407	408	410	414	456	457	459	463	368	407	408	410	414	456	457	459	463	368	407	408	410	414	456	457	459	463	
	Lo PR	133	135	138	144	141	143	146	152	148	150	153	159	154	156	159	165	160	162	165	170	167	169	172	178	165	167	170	176	167	169	172	178	165	167	170	176	167	169	172	178	165	167	170	176	167	169	172	178				
85	700	MBh	24.3	24.7	25.4	26.5	24.1	24.5	25.2	26.3	23.5	23.8	24.5	25.6	22.4	22.8	23.5	24.6	21.1	21.4	22.2	23.2	19.9	20.2	20.9	22.0	21.1	21.4	22.2	23.2	19.9	20.2	20.9	22.0	21.1	21.4	22.2	23.2	19.9	20.2	20.9	22.0	21.1	21.4	22.2	23.2	19.9	20.2	20.9	22.0			
		S/T	1.00	0.89	0.74	0.59	1.00	1.00	0.75	0.59	1.00	1.00	0.78	0.62	1.00	1.00	0.80	0.64	1.00	1.00	0.75	0.66	1.00	1.00	0.75	0.72	0.64	1.00	0.75	0.66	1.00	1.00	0.75	0.72	0.64	1.00	0.75	0.66	1.00	1.00	0.75	0.72	0.64	1.00	0.75	0.66	1.00	1.00	0.75	0.72			
		ΔT	31	29	26	23	31	29	26	23	31	29	26	23	31	29	26	23	31	29	26	22	32	30	27	23	26	23	20	17	32	30	27	23	26	23	20	17	32	30	27	23	26	23	20	17	32	30	27	23			
		kW	1.30	1.30	1.30	1.31	1.46	1.46	1.45	1.47	1.63	1.63	1.63	1.64	1.82	1.82	1.82	1.83	2.03	2.03	2.03	2.04	2.28	2.28	2.27	2.29	1.83	2.03	2.03	2.04	2.28	2.28	2.27	2.29	1.83	2.03	2.03	2.04	2.28	2.28	2.27	2.29	1.83	2.03	2.03	2.04	2.28	2.28	2.27	2.29			
		Amps	5.3	5.3	5.3	5.4	6.0	6.0	6.0	6.1	6.8	6.8	6.8	6.9	7.7	7.7	7.7	7.7	8.7	8.7	8.7	8.7	9.8	9.8	9.8	9.8	7.7	8.7	8.7	8.7	9.8	9.8	9.8	9.8	7.7	8.7	8.7	8.7	9.8	9.8	9.8	9.8	7.7	8.7	8.7	8.7	9.8	9.8	9.8	9.8			
	Hi PR	239	240	242	246	277	278	279	284	316	317	319	323	359	360	362	366	405	406	407	412	454	455	456	461	366	405	406	407	412	454	455	456	461	366	405	406	407	412	454	455	456	461	366	405	406	407	412	454	455	456	461	
	Lo PR	132	133	137	142	140	141	145	150	147	148	152	157	153	154	158	163	158	160	163	169	16																															

IDB		OUTDOOR AMBIENT TEMPERATURE																							
		65°F				75°F				85°F				95°F				105°F				115°F			
		59	63	67	71	59	63	67	71	59	63	67	71	59	63	67	71	59	63	67	71	59	63	67	71
70	AIRFLOW	59	63	67	71	59	63	67	71	59	63	67	71	59	63	67	71	59	63	67	71	59	63	67	71
	MBh	26.5	26.9	27.7	-	26.3	26.6	27.4	-	25.6	26.0	26.7	-	24.4	24.8	25.6	-	22.9	23.3	24.1	-	21.6	22.0	22.8	-
	S/T	0.59	0.51	0.39	-	0.59	0.52	0.39	-	0.62	0.54	0.42	-	0.64	0.56	0.43	-	1.00	0.58	0.46	-	1.00	0.63	0.50	-
	ΔT	20	19	15	-	20	19	15	-	21	19	15	-	20	19	15	-	20	18	15	-	21	19	16	-
	kW	1.09	1.09	1.08	-	1.22	1.22	1.21	-	1.36	1.36	1.36	-	1.52	1.52	1.52	-	1.70	1.70	1.69	-	1.90	1.90	1.90	-
	Amps	4.5	4.5	4.5	-	5.1	5.1	5.1	-	5.8	5.8	5.8	-	6.5	6.5	6.5	-	7.3	7.3	7.3	-	8.3	8.3	8.3	-
	Hi PR	193	194	196	-	224	225	226	-	256	257	258	-	290	291	292	-	327	328	329	-	367	368	369	-
	Lo PR	123	124	127	-	130	132	135	-	137	138	141	-	142	144	147	-	148	149	152	-	154	156	159	-
	MBh	26.8	27.2	28.0	-	26.6	26.9	27.7	-	25.9	26.2	27.0	-	24.7	25.1	25.8	-	23.2	23.6	24.4	-	21.9	22.3	23.1	-
	S/T	0.63	0.56	0.43	-	0.64	0.57	0.44	-	0.66	0.59	0.46	-	1.00	0.61	0.48	-	1.00	0.63	0.50	-	1.00	0.68	0.55	-
ΔT	20	18	14	-	20	18	14	-	20	18	14	-	19	18	14	-	19	17	14	-	20	19	15	-	
kW	1.09	1.09	1.09	-	1.22	1.22	1.22	-	1.37	1.37	1.37	-	1.53	1.53	1.52	-	1.70	1.70	1.70	-	1.91	1.91	1.91	-	
Amps	4.6	4.5	4.5	-	5.2	5.1	5.1	-	5.8	5.8	5.8	-	6.5	6.5	6.5	-	7.3	7.3	7.3	-	8.3	8.3	8.3	-	
Hi PR	195	196	197	-	225	226	227	-	257	258	259	-	291	292	294	-	329	329	331	-	368	369	370	-	
Lo PR	124	126	129	-	132	133	136	-	138	140	143	-	144	145	148	-	149	151	154	-	156	157	160	-	
MBh	27.3	27.7	28.5	-	27.1	27.5	28.3	-	26.4	26.8	27.6	-	25.2	25.6	26.4	-	23.8	24.1	24.9	-	22.4	22.8	23.6	-	
S/T	0.67	0.60	0.47	-	0.67	0.60	0.47	-	0.70	0.63	0.50	-	1.00	0.64	0.52	-	1.00	0.66	0.54	-	1.00	0.71	0.59	-	
ΔT	18	16	13	-	18	16	13	-	19	17	13	-	18	16	13	-	18	16	13	-	19	17	14	-	
kW	1.10	1.10	1.10	-	1.23	1.23	1.23	-	1.38	1.37	1.37	-	1.53	1.53	1.53	-	1.71	1.71	1.71	-	1.92	1.92	1.91	-	
Amps	4.6	4.6	4.6	-	5.2	5.2	5.2	-	5.8	5.8	5.8	-	6.6	6.6	6.6	-	7.4	7.4	7.4	-	8.3	8.3	8.3	-	
Hi PR	197	198	199	-	227	228	229	-	259	260	261	-	293	294	296	-	330	331	333	-	370	371	372	-	
Lo PR	127	128	131	-	134	136	139	-	141	142	145	-	146	148	151	-	152	153	156	-	158	160	163	-	

IDB		OUTDOOR AMBIENT TEMPERATURE																							
		65°F				75°F				85°F				95°F				105°F				115°F			
		59	63	67	71	59	63	67	71	59	63	67	71	59	63	67	71	59	63	67	71	59	63	67	71
75	AIRFLOW	59	63	67	71	59	63	67	71	59	63	67	71	59	63	67	71	59	63	67	71	59	63	67	71
	MBh	26.5	26.9	27.7	28.9	26.3	26.7	27.5	28.7	25.6	26.0	26.8	28.0	24.4	24.8	25.6	26.8	23.0	23.3	24.1	25.3	21.6	22.0	22.8	24.0
	S/T	0.71	0.64	0.51	0.37	0.72	0.64	0.51	0.38	1.00	0.67	0.54	0.40	1.00	0.69	0.56	0.42	1.00	0.71	0.58	0.44	1.00	1.00	0.63	0.49
	ΔT	25	23	19	16	25	23	19	15	25	23	19	16	25	23	19	15	24	22	19	15	26	24	20	16
	kW	1.09	1.09	1.08	1.09	1.22	1.22	1.21	1.22	1.36	1.36	1.36	1.37	1.52	1.52	1.52	1.53	1.70	1.70	1.69	1.70	1.90	1.90	1.90	1.91
	Amps	4.5	4.5	4.5	4.6	5.1	5.1	5.1	5.2	5.8	5.8	5.8	5.8	6.5	6.5	6.5	6.5	7.3	7.3	7.3	7.3	8.3	8.3	8.2	8.3
	Hi PR	194	194	196	199	224	225	226	230	256	257	258	261	290	291	292	296	327	328	330	333	367	368	369	372
	Lo PR	123	124	127	133	130	132	135	140	137	138	141	146	142	144	147	152	148	149	152	157	154	156	159	164
	MBh	26.8	27.2	28.0	29.2	26.6	27.0	27.7	28.9	25.9	26.3	27.1	28.3	24.7	25.1	25.9	27.1	23.2	23.6	24.4	25.6	21.9	22.3	23.1	24.3
	S/T	0.75	0.68	0.55	0.42	0.76	0.69	0.56	0.42	1.00	0.71	0.58	0.45	1.00	0.73	0.60	0.47	1.00	0.75	0.62	0.49	1.00	1.00	0.67	0.54
ΔT	24	22	18	15	24	22	18	15	24	22	18	15	24	22	18	15	23	22	18	14	25	23	19	15	
kW	1.09	1.09	1.09	1.10	1.22	1.22	1.22	1.23	1.37	1.37	1.37	1.37	1.53	1.52	1.52	1.53	1.70	1.70	1.70	1.71	1.91	1.91	1.91	1.92	
Amps	4.5	4.5	4.5	4.6	5.1	5.1	5.1	5.2	5.8	5.8	5.8	5.8	6.5	6.5	6.5	6.6	7.3	7.3	7.3	7.4	8.3	8.3	8.3	8.3	
Hi PR	195	196	197	200	225	226	228	231	257	258	259	263	292	292	294	297	329	330	331	334	368	369	370	374	
Lo PR	124	126	129	134	132	133	136	141	138	140	143	148	144	145	148	153	149	151	154	159	156	157	160	166	
MBh	27.3	27.7	28.5	29.7	27.1	27.5	28.3	29.5	26.4	26.8	27.6	28.8	25.2	25.6	26.4	27.6	23.8	24.1	24.9	26.1	22.4	22.8	23.6	24.8	
S/T	0.79	0.72	0.59	0.45	1.00	0.72	0.60	0.46	1.00	0.75	0.62	0.48	1.00	0.77	0.64	0.50	1.00	0.79	0.66	0.52	1.00	1.00	0.71	0.57	
ΔT	23	21	17	13	23	21	17	13	23	21	17	14	23	21	17	13	22	20	17	13	23	22	18	14	
kW	1.10	1.10	1.10	1.11	1.23	1.23	1.23	1.24	1.38	1.37	1.37	1.38	1.53	1.53	1.53	1.54	1.71	1.71	1.71	1.72	1.92	1.91	1.91	1.92	
Amps	4.6	4.6	4.6	4.6	5.2	5.2	5.2	5.2	5.8	5.8	5.8	5.9	6.6	6.6	6.6	6.6	7.4	7.4	7.4	7.4	8.3	8.3	8.3	8.4	
Hi PR	197	198	199	202	227	228	230	233	259	260	261	265	294	294	296	299	331	331	333	336	370	371	372	376	
Lo PR	127	128	131	136	134	136	139	144	141	142	145	150	146	148	151	156	152	153	156	161	158	160	163	168	

IDB: Entering Indoor Dry Bulb Temperature
 High and low pressures are measured at the liquid and suction service valves.
 Shaded area reflects ACCA (TVA) conditions
 kW = Total system power
 Amps = outdoor unit amps (compressor + fan)

IDB	AIRFLOW	OUTDOOR AMBIENT TEMPERATURE												ENTERING INDOOR WET BULB TEMPERATURE												
		65°F				75°F				85°F				95°F				105°F				115°F				
		59	63	67	71	59	63	67	71	59	63	67	71	59	63	67	71	59	63	67	71	59	63	67	71	
70	1080	MBh	35.5	36.0	37.0	-	35.1	35.6	36.7	-	34.2	34.7	35.8	-	32.7	33.2	34.2	-	30.7	31.2	32.3	-	29.0	29.5	30.5	-
		S/T	0.66	0.59	0.45	-	0.67	0.60	0.46	-	0.70	0.62	0.48	-	0.72	0.64	0.50	-	1.00	0.66	0.53	-	1.00	0.71	0.58	-
		ΔT	19	17	14	-	19	17	13	-	19	17	14	-	19	17	13	-	19	17	13	-	20	18	14	-
		kW	1.89	1.89	1.89	-	2.13	2.12	2.12	-	2.39	2.39	2.38	-	2.67	2.67	2.67	-	2.99	2.99	2.99	-	3.36	3.36	3.36	-
		Amps	7.6	7.6	7.6	-	8.7	8.7	8.7	-	9.9	9.9	9.9	-	11.2	11.2	11.2	-	12.6	12.6	12.6	-	14.3	14.3	14.3	-
	1200	Hi PR	251	252	254	-	291	292	293	-	332	333	335	-	376	377	379	-	424	425	427	-	475	476	478	-
		Lo PR	121	123	126	-	128	130	133	-	135	136	139	-	140	142	145	-	145	147	150	-	152	153	156	-
		MBh	35.9	36.4	37.5	-	35.6	36.1	37.2	-	34.7	35.2	36.3	-	33.1	33.6	34.7	-	31.2	31.7	32.8	-	29.5	30.0	31.0	-
		S/T	0.70	0.62	0.48	-	0.70	0.63	0.49	-	0.73	0.65	0.52	-	0.75	0.67	0.54	-	1.00	0.69	0.56	-	1.00	0.74	0.61	-
		ΔT	18	16	13	-	18	16	13	-	18	16	13	-	18	16	13	-	18	16	12	-	19	17	14	-
1350	kW	1.90	1.90	1.89	-	2.14	2.13	2.13	-	2.40	2.40	2.39	-	2.68	2.68	2.68	-	3.00	3.00	2.99	-	3.37	3.37	3.37	-	
	Amps	7.6	7.6	7.6	-	8.7	8.7	8.7	-	9.9	9.9	9.9	-	11.2	11.2	11.2	-	12.7	12.7	12.7	-	14.4	14.4	14.4	-	
	Hi PR	253	254	256	-	292	293	295	-	334	335	336	-	378	379	381	-	426	427	429	-	477	478	480	-	
	Lo PR	123	124	127	-	130	132	135	-	136	138	141	-	142	143	146	-	147	149	152	-	154	155	158	-	
	MBh	36.7	37.2	38.2	-	36.4	36.9	37.9	-	35.4	35.9	37.0	-	33.9	34.4	35.4	-	32.0	32.4	33.5	-	30.2	30.7	31.7	-	

75	1080	MBh	35.5	36.0	37.0	38.6	35.2	35.7	36.7	38.3	34.3	34.7	35.8	37.4	32.7	33.2	34.2	35.8	30.8	31.3	32.3	33.9	29.0	29.5	30.5	32.1	
		S/T	0.79	0.72	0.58	0.44	0.80	0.72	0.59	0.45	1.00	0.75	0.61	0.47	1.00	0.77	0.63	0.49	1.00	0.79	0.66	0.51	1.00	0.84	0.71	0.56	
		ΔT	23	21	18	14	23	21	18	14	23	21	18	14	23	21	18	14	23	21	17	14	24	22	18	15	
		kW	1.89	1.89	1.88	1.90	2.13	2.12	2.12	2.14	2.14	2.39	2.39	2.38	2.40	2.67	2.67	2.67	2.68	2.99	2.99	2.98	3.00	3.36	3.36	3.36	3.37
		Amps	7.6	7.6	7.6	7.7	8.7	8.7	8.6	8.7	8.8	9.9	9.9	9.8	9.9	11.2	11.2	11.2	11.2	12.6	12.6	12.6	12.7	14.3	14.3	14.3	14.4
	1200	Hi PR	251	253	254	259	291	292	294	298	332	333	335	339	376	377	379	383	424	425	427	431	475	476	478	482	
		Lo PR	121	123	126	131	128	130	133	138	135	136	139	144	140	142	145	150	145	147	150	155	152	153	157	162	
		MBh	36.0	36.5	37.5	39.1	35.7	36.1	37.2	38.8	38.8	34.7	35.2	36.3	37.9	33.2	33.7	34.7	36.3	31.2	31.7	32.8	34.4	29.5	30.0	31.0	32.6
		S/T	0.82	0.75	0.61	0.47	0.83	0.76	0.62	0.48	1.00	0.78	0.64	0.50	1.00	0.80	0.66	0.52	1.00	0.82	0.69	0.54	1.00	1.00	0.74	0.60	
		ΔT	22	20	17	13	22	20	17	13	22	20	17	13	22	20	17	13	22	20	16	13	23	21	18	14	
1350	kW	1.90	1.90	1.89	1.91	2.13	2.13	2.13	2.15	2.40	2.40	2.39	2.41	2.68	2.68	2.68	2.69	3.00	3.00	2.99	3.01	3.37	3.37	3.37	3.38		
	Amps	7.6	7.6	7.6	7.7	8.7	8.7	8.7	8.8	9.9	9.9	9.9	10.0	11.2	11.2	11.2	11.3	12.7	12.7	12.6	12.7	14.4	14.4	14.3	14.4		
	Hi PR	253	254	256	260	293	294	295	300	334	335	337	341	378	379	381	385	426	427	429	433	477	478	480	484		
	Lo PR	123	124	127	132	130	132	135	140	136	138	141	146	142	143	146	151	147	149	152	157	154	155	158	163		
	MBh	36.7	37.2	38.2	39.8	36.4	36.9	37.9	39.5	39.5	35.5	36.0	37.0	38.6	33.9	34.4	35.4	37.0	32.0	32.5	33.5	35.1	30.2	30.7	31.8	33.4	

IDB: Entering Indoor Dry Bulb Temperature
 High and low pressures are measured at the liquid and suction service valves.
 Shaded area reflects ACCA (TVA) conditions
 kW = Total system power
 Amps = outdoor unit amps (compressor + fan)

EXPANDED COOLING DATA — GSZC160601C* / CA*F4961*6D*+MBVC2000*-1A*+TX — HIGH STAGE

IDB	OUTDOOR AMBIENT TEMPERATURE												ENTERING INDOOR WET BULB TEMPERATURE												
	65°F				75°F				85°F				95°F				105°F				115°F				
	59	63	67	71	59	63	67	71	59	63	67	71	59	63	67	71	59	63	67	71	59	63	67	71	
1540	MBh	57.4	58.2	59.9	-	56.9	57.7	59.4	-	55.4	56.2	57.9	-	52.8	53.6	55.3	-	49.6	50.4	52.2	-	46.7	47.6	49.3	-
	S/T	0.59	0.52	0.38	-	0.60	0.52	0.39	-	0.63	0.55	0.41	-	0.65	0.57	0.43	-	0.67	0.59	0.46	-	1.00	0.64	0.51	-
	ΔT	20	18	15	-	20	18	15	-	20	18	15	-	20	18	15	-	20	18	14	-	21	19	15	-
	KW	3.20	3.20	3.19	-	3.60	3.60	3.59	-	4.05	4.05	4.04	-	4.54	4.54	4.53	-	5.09	5.08	5.08	-	5.73	5.72	5.72	-
	Amps	12.6	12.6	12.6	-	14.5	14.4	14.4	-	16.5	16.5	16.5	-	18.8	18.7	18.7	-	21.2	21.2	21.2	-	24.2	24.2	24.1	-
	Hi PR	248	249	251	-	287	288	290	-	328	329	331	-	372	373	375	-	420	421	423	-	471	472	473	-
	Lo PR	116	118	121	-	124	125	128	-	130	131	134	-	135	137	139	-	140	142	145	-	147	148	151	-
	1800	MBh	58.2	59.0	60.8	-	57.7	58.5	60.3	-	56.2	57.0	58.8	-	53.6	54.5	56.2	-	50.5	51.3	53.0	-	47.6	48.4	50.1
S/T		0.67	0.59	0.45	-	0.67	0.60	0.46	-	0.70	0.62	0.49	-	0.72	0.64	0.51	-	0.74	0.66	0.53	-	1.00	0.71	0.58	-
ΔT		19	17	13	-	19	17	13	-	19	17	14	-	19	17	13	-	18	16	13	-	19	18	14	-
KW		3.23	3.22	3.22	-	3.63	3.63	3.62	-	4.08	4.08	4.07	-	4.57	4.56	4.56	-	5.11	5.11	5.10	-	5.75	5.75	5.74	-
Amps		12.7	12.7	12.7	-	14.6	14.6	14.5	-	16.6	16.6	16.6	-	18.9	18.9	18.8	-	21.4	21.3	21.3	-	24.3	24.3	24.2	-
Hi PR		250	251	253	-	289	290	292	-	330	331	333	-	375	376	377	-	422	423	425	-	473	474	476	-
Lo PR		118	120	123	-	126	127	130	-	132	133	136	-	137	138	141	-	142	144	147	-	149	150	153	-
1980		MBh	58.9	59.8	61.5	-	58.4	59.2	61.0	-	56.9	57.7	59.5	-	54.4	55.2	56.9	-	51.2	52.0	53.7	-	48.3	49.1	50.8
	S/T	0.70	0.62	0.48	-	0.70	0.63	0.49	-	0.73	0.65	0.52	-	0.75	0.67	0.53	-	1.00	0.69	0.56	-	1.00	0.74	0.61	-
	ΔT	18	16	13	-	18	16	13	-	18	16	13	-	18	16	13	-	18	16	12	-	19	17	13	-
	KW	3.24	3.24	3.23	-	3.64	3.64	3.63	-	4.09	4.09	4.08	-	4.58	4.58	4.57	-	5.13	5.12	5.12	-	5.76	5.76	5.75	-
	Amps	12.8	12.8	12.7	-	14.6	14.6	14.6	-	16.7	16.7	16.7	-	18.9	18.9	18.9	-	21.4	21.4	21.4	-	24.4	24.3	24.3	-
	Hi PR	252	253	255	-	291	292	294	-	332	333	335	-	376	377	379	-	424	425	427	-	475	476	477	-
	Lo PR	120	121	124	-	127	129	131	-	133	135	138	-	139	140	143	-	144	145	148	-	150	152	155	-

1540	MBh	57.4	58.2	59.9	62.6	56.9	57.7	59.4	62.0	55.4	56.2	57.9	60.5	52.8	53.6	55.3	58.0	49.7	50.5	52.2	54.8	46.8	47.6	49.3	51.9
	S/T	0.72	0.65	0.51	0.37	0.73	0.65	0.52	0.37	0.83	0.75	0.62	0.47	1.00	0.70	0.56	0.42	1.00	0.72	0.58	0.44	1.00	0.77	0.64	0.49
	ΔT	24	22	19	15	24	22	19	15	24	22	19	15	24	22	19	15	24	22	18	15	25	23	19	16
	KW	3.20	3.20	3.19	3.22	3.60	3.60	3.59	3.62	4.05	4.05	4.04	4.07	4.54	4.54	4.53	4.56	5.08	5.08	5.07	5.11	5.72	5.72	5.71	5.74
	Amps	12.6	12.6	12.6	12.7	14.5	14.4	14.4	14.5	16.5	16.5	16.5	16.6	18.7	18.7	18.7	18.8	21.2	21.2	21.2	21.3	24.2	24.2	24.1	24.3
	Hi PR	248	249	251	255	287	288	290	294	328	329	331	335	372	373	375	379	420	421	423	427	471	472	474	478
	Lo PR	117	118	121	126	124	125	128	133	130	131	134	139	135	137	140	144	140	142	145	150	147	148	151	156
	1800	MBh	58.3	59.1	60.8	63.4	57.8	58.6	60.3	62.9	56.3	57.1	58.8	61.4	53.7	54.5	56.2	58.8	50.5	51.3	53.0	55.7	47.6	48.4	50.2
S/T		0.80	0.72	0.58	0.44	0.80	0.73	0.59	0.45	0.83	0.75	0.62	0.47	1.00	0.77	0.63	0.49	1.00	0.79	0.66	0.51	1.00	0.84	0.71	0.57
ΔT		23	21	17	14	23	21	17	14	23	21	18	14	23	21	17	14	22	20	17	14	23	22	18	15
KW		3.22	3.22	3.21	3.24	3.63	3.62	3.62	3.65	4.08	4.07	4.07	4.10	4.56	4.56	4.55	4.59	5.11	5.11	5.10	5.13	5.75	5.74	5.74	5.77
Amps		12.7	12.7	12.7	12.8	14.6	14.6	14.5	14.7	16.6	16.6	16.6	16.7	18.9	18.8	18.8	19.0	21.4	21.3	21.3	21.4	24.3	24.3	24.2	24.4
Hi PR		250	252	253	258	290	291	292	297	331	332	333	338	375	376	378	382	422	423	425	430	473	474	476	480
Lo PR		118	120	123	128	126	127	130	135	132	133	136	141	137	139	141	146	142	144	147	152	149	150	153	158
1980		MBh	59.0	59.8	61.5	64.1	58.5	59.3	61.0	63.6	57.0	57.8	59.5	62.1	54.4	55.2	56.9	59.5	51.2	52.0	53.8	56.4	48.3	49.2	50.9
	S/T	0.82	0.75	0.61	0.47	0.83	0.75	0.62	0.48	1.00	0.78	0.64	0.50	1.00	0.80	0.66	0.52	1.00	0.82	0.69	0.54	1.00	0.87	0.74	0.59
	ΔT	22	20	17	13	22	20	17	13	22	20	17	13	22	20	17	13	22	20	16	13	23	21	17	14
	KW	3.24	3.23	3.23	3.26	3.64	3.64	3.63	3.66	4.09	4.09	4.08	4.11	4.58	4.58	4.57	4.60	5.12	5.12	5.11	5.14	5.76	5.76	5.75	5.78
	Amps	12.8	12.8	12.7	12.9	14.6	14.6	14.6	14.7	16.7	16.7	16.6	16.8	18.9	18.9	18.9	19.0	21.4	21.4	21.4	21.5	24.3	24.3	24.3	24.4
	Hi PR	252	253	255	259	291	292	294	298	332	333	335	339	376	377	379	384	424	425	427	431	475	476	478	482
	Lo PR	120	121	124	129	127	129	132	136	133	135	138	143	139	140	143	148	144	145	148	153	150	152	155	160

Shaded area reflects ACCA (TVA) conditions

IDB: Entering Indoor Dry Bulb Temperature
High and low pressures are measured at the liquid and suction service valves.

kW = Total system power
Amps = outdoor unit amps (compressor + fan)

GSZC160241C* / CA*F3137*6A*+MBVC1200**-1A*+TX — LOW STAGE

	OUTDOOR AMBIENT TEMPERATURE																
	65	60	55	50	47	45	40	35	30	25	20	17	15	10	5	0	-5
MBh	21.21	19.75	18.32	16.91	16.02	15.33	13.61	12.04	10.77	9.82	9.10	8.71	8.23	7.01	5.79	4.58	3.36
T/R	35.97	33.83	31.68	29.53	28.25	27.03	24.00	21.24	19.00	17.32	16.05	15.37	14.51	12.37	10.22	8.07	5.93
KW	1.03	1.01	0.98	0.96	0.94	0.93	0.90	0.88	0.85	0.83	0.80	0.79	0.78	0.75	0.72	0.70	0.67
AMPS	3.7	3.5	3.4	3.3	3.3	3.2	3.1	3.0	2.9	2.8	2.7	2.6	2.5	2.4	2.3	2.2	2.1
COP	6.02	5.75	5.48	5.19	4.99	4.83	4.41	4.02	3.70	3.48	3.33	3.25	3.11	2.74	2.34	1.92	1.46
Hi PR	362	350	339	327	320	315	303	292	280	268	256	249	244	233	221	209	197
LO PR	143	134	125	116	111	107	99	90	81	72	63	58	54	45	36	27	18

GSZC160241C* / CA*F3137*6A*+MBVC1200**-1A*+TX — HIGH STAGE

	OUTDOOR AMBIENT TEMPERATURE																
	65	60	55	50	47	45	40	35	30	25	20	17	15	10	5	0	-5
MBh	28.42	26.68	24.97	23.29	22.20	21.41	19.43	17.56	16.03	14.91	14.09	13.65	13.08	11.66	10.23	8.81	7.38
T/R	28.12	26.65	25.19	23.72	22.84	22.05	19.99	18.07	16.49	15.34	14.50	14.04	13.46	11.99	10.52	9.06	7.59
KW	1.68	1.66	1.65	1.64	1.63	1.62	1.61	1.59	1.58	1.56	1.55	1.54	1.53	1.52	1.50	1.49	1.47
AMPS	5.9	5.8	5.7	5.7	5.6	5.6	5.6	5.5	5.4	5.4	5.3	5.3	5.2	5.2	5.1	5.0	5.0
COP	4.96	4.70	4.44	4.17	4.00	3.87	3.55	3.23	2.98	2.80	2.67	2.60	2.50	2.25	1.99	1.73	1.47
Hi PR	374	362	349	337	330	325	313	301	289	277	264	257	252	240	228	216	204
LO PR	146	137	127	118	113	109	100	91	82	73	64	59	55	46	37	28	19

GSZC160361C* / CA*F3743*6D*+MBVC1600**-1A*+TX — LOW STAGE

	OUTDOOR AMBIENT TEMPERATURE																
	65	60	55	50	47	45	40	35	30	25	20	17	15	10	5	0	-5
MBh	32.21	30.06	27.94	25.86	24.53	23.52	21.00	18.69	16.81	15.40	14.35	13.79	13.07	11.28	9.50	7.71	5.92
T/R	38.24	36.03	33.82	31.61	30.28	29.04	25.92	23.07	20.75	19.02	17.72	17.03	16.14	13.93	11.72	9.51	7.30
KW	1.75	1.70	1.64	1.59	1.56	1.53	1.48	1.42	1.37	1.31	1.26	1.22	1.20	1.15	1.09	1.04	0.98
AMPS	6.4	6.2	6.0	5.7	5.6	5.5	5.2	5.0	4.8	4.5	4.3	4.1	4.0	3.8	3.6	3.3	3.1
COP	5.38	5.18	4.98	4.77	4.62	4.49	4.16	3.85	3.60	3.44	3.34	3.30	3.19	2.88	2.55	2.18	1.77
Hi PR	415	401	388	374	366	361	347	334	320	307	293	285	280	266	253	239	226
LO PR	134	126	117	109	104	101	92	84	76	67	59	54	51	42	34	26	17

GSZC160361C* / CA*F3743*6D*+MBVC1600**-1A*+TX — HIGH STAGE

	OUTDOOR AMBIENT TEMPERATURE																
	65	60	55	50	47	45	40	35	30	25	20	17	15	10	5	0	-5
MBh	43.10	40.55	38.05	35.59	34.00	32.84	30.01	27.28	25.04	23.40	22.23	21.60	20.77	18.71	16.64	14.57	12.51
T/R	35.53	33.76	31.99	30.21	29.15	28.21	25.73	23.39	21.47	20.07	19.06	18.52	17.81	16.04	14.27	12.49	10.72
KW	2.87	2.82	2.77	2.72	2.69	2.67	2.62	2.58	2.53	2.48	2.43	2.40	2.38	2.33	2.28	2.23	2.18
AMPS	10.8	10.6	10.3	10.1	10.0	9.9	9.7	9.5	9.3	9.1	8.8	8.7	8.6	8.4	8.2	8.0	7.8
COP	4.40	4.21	4.02	3.83	3.70	3.60	3.35	3.10	2.91	2.77	2.68	2.64	2.56	2.35	2.14	1.91	1.68
Hi PR	428	414	400	386	378	372	359	345	331	317	303	294	289	275	261	247	233
LO PR	137	128	120	111	106	103	94	86	77	69	60	55	52	43	35	26	18

Calculations are based on nominal CFM and 70 °F indoor dry bulb.

Amps = Outdoor unit amps (comp.+fan)

Note: Shaded area is AHRI Rating Conditions at 47°F outdoor ambient temperature

kW = Total system power

GSZC160481C* / CA*F4961*6D*+MBVC2000**-1A*+TX — LOW STAGE

	OUTDOOR AMBIENT TEMPERATURE																
	65	60	55	50	47	45	40	35	30	25	20	17	15	10	5	0	-5
MBh	44.95	41.85	38.81	35.81	33.91	32.44	28.78	25.46	22.76	20.74	19.21	18.39	17.35	14.77	12.18	9.59	7.01
T/R	40.84	38.39	35.95	33.50	32.04	30.65	27.19	24.06	21.51	19.59	18.15	17.37	16.39	13.95	11.51	9.06	6.62
KW	2.12	2.10	2.07	2.05	2.03	2.02	1.99	1.97	1.94	1.92	1.89	1.87	1.86	1.84	1.81	1.79	1.76
AMPS	7.7	7.6	7.5	7.3	7.3	7.2	7.1	7.0	6.9	6.8	6.7	6.6	6.5	6.4	6.3	6.2	6.1
COP	6.20	5.85	5.49	5.13	4.89	4.71	4.23	3.79	3.44	3.17	2.98	2.88	2.73	2.35	1.97	1.57	1.17
Hi PR	393	380	367	354	347	341	329	316	303	290	278	270	265	252	239	227	214
LO PR	129	121	113	105	100	97	89	81	73	65	57	52	49	41	33	25	17

GSZC160481C* / CA*F4961*6D*+MBVC2000**-1A*+TX — HIGH STAGE

	OUTDOOR AMBIENT TEMPERATURE																
	65	60	55	50	47	45	40	35	30	25	20	17	15	10	5	0	-5
MBh	60.24	56.53	52.89	49.31	47.00	45.33	41.10	37.13	33.87	31.48	29.74	28.80	27.59	24.55	21.52	18.49	15.45
T/R	33.52	31.77	30.01	28.25	27.20	26.25	23.79	21.48	19.60	18.22	17.21	16.67	15.96	14.21	12.45	10.70	8.94
KW	3.42	3.45	3.47	3.50	3.51	3.52	3.55	3.58	3.60	3.63	3.65	3.67	3.68	3.71	3.73	3.76	3.78
AMPS	12.3	12.4	12.6	12.7	12.7	12.8	12.9	13.0	13.1	13.2	13.3	13.4	13.5	13.6	13.7	13.8	13.9
COP	5.16	4.81	4.46	4.13	3.92	3.77	3.39	3.04	2.76	2.54	2.38	2.30	2.20	1.94	1.69	1.44	1.20
Hi PR	405	392	379	366	358	352	339	326	313	300	286	279	273	260	247	234	221
LO PR	131	123	115	107	102	99	91	82	74	66	58	53	50	41	33	25	17

GSZC160601C* / CA*F4961*6D*+MBVC2000**-1A*+TX — LOW STAGE

	OUTDOOR AMBIENT TEMPERATURE																
	65	60	55	50	47	45	40	35	30	25	20	17	15	10	5	0	-5
MBh	57.01	53.11	49.45	45.46	42.92	40.93	36.01	31.58	27.98	25.27	23.20	22.09	20.70	17.23	13.76	10.28	6.81
T/R	46.24	43.34	40.44	37.55	35.81	34.14	30.03	26.34	23.34	21.08	19.35	18.43	17.27	14.37	11.47	8.58	5.68
KW	2.89	2.82	2.76	2.69	2.65	2.62	2.56	2.49	2.42	2.36	2.29	2.25	2.23	2.16	2.09	2.03	1.96
AMPS	10.8	10.5	10.2	9.9	9.8	9.6	9.4	9.1	8.8	8.5	8.2	8.0	7.9	7.6	7.3	7.0	6.8
COP	5.78	5.51	5.26	4.95	4.75	4.57	4.13	3.71	3.38	3.14	2.97	2.88	2.73	2.34	1.93	1.49	1.02
Hi PR	445	431	416	402	393	387	373	358	344	329	315	306	300	286	272	257	243
LO PR	132	123	115	107	102	99	91	83	74	66	58	53	50	42	33	25	17

GSZC160601C* / CA*F4961*6D*+MBVC2000**-1A*+TX — HIGH STAGE

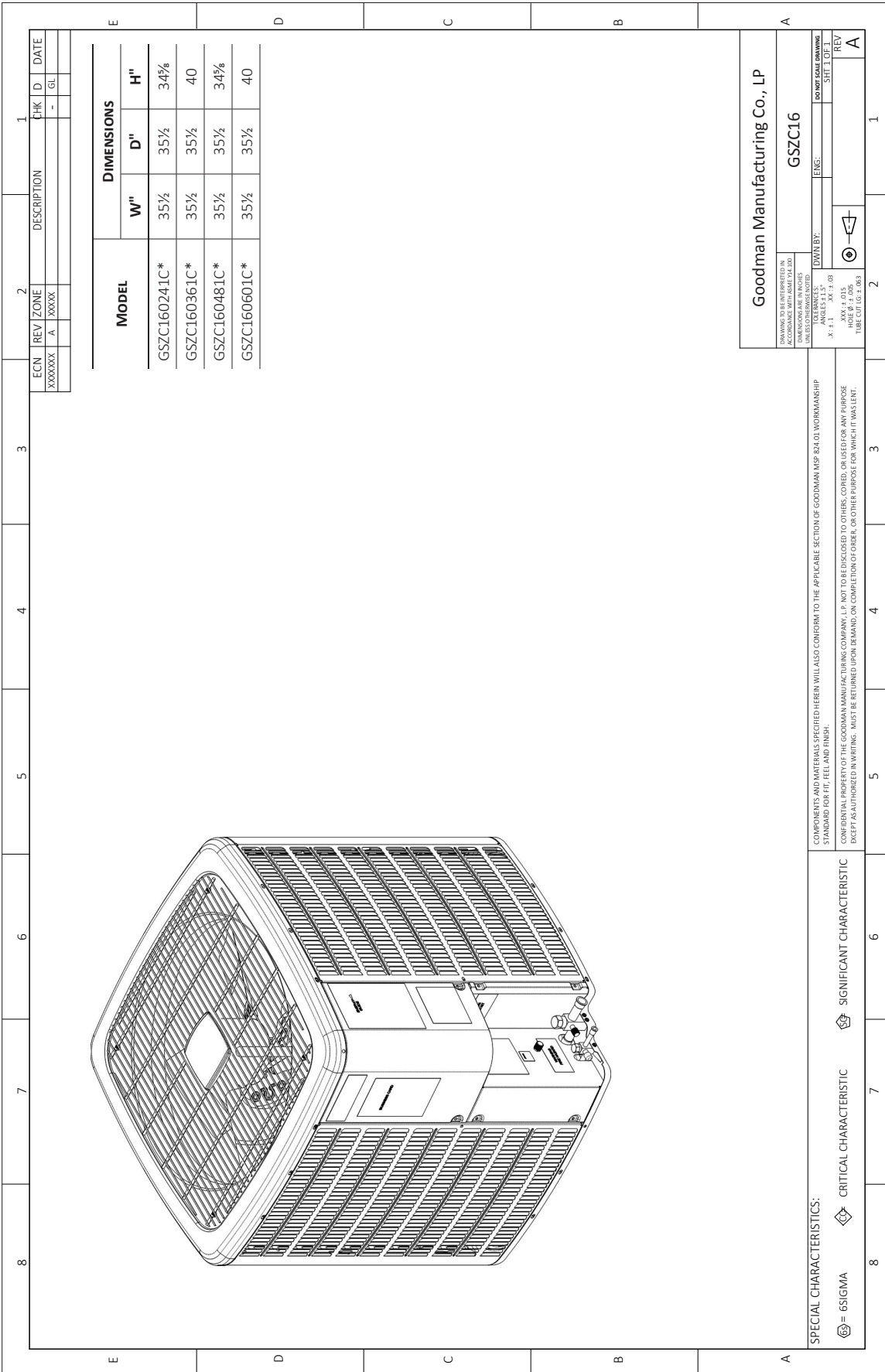
	OUTDOOR AMBIENT TEMPERATURE																
	65	60	55	50	47	45	40	35	30	25	20	17	15	10	5	0	-5
MBh	77.42	72.40	67.46	62.61	59.50	57.20	51.36	45.97	41.58	38.31	35.90	34.60	32.94	28.79	24.64	20.49	16.34
T/R	40.55	38.29	36.03	33.77	32.41	31.15	27.97	25.04	22.65	20.87	19.55	18.85	17.94	15.68	13.42	11.16	8.90
KW	4.70	4.67	4.64	4.61	4.59	4.58	4.55	4.52	4.49	4.46	4.43	4.41	4.40	4.37	4.34	4.31	4.28
AMPS	17.7	17.6	17.5	17.3	17.3	17.2	17.1	16.9	16.8	16.7	16.5	16.5	16.4	16.3	16.2	16.0	15.9
COP	4.83	4.55	4.26	3.98	3.80	3.66	3.31	2.98	2.72	2.52	2.38	2.30	2.20	1.93	1.67	1.39	1.12
Hi PR	460	445	430	415	406	400	385	370	355	340	325	316	310	295	280	265	250
LO PR	134	126	117	109	104	101	92	84	76	67	59	54	51	42	34	26	17

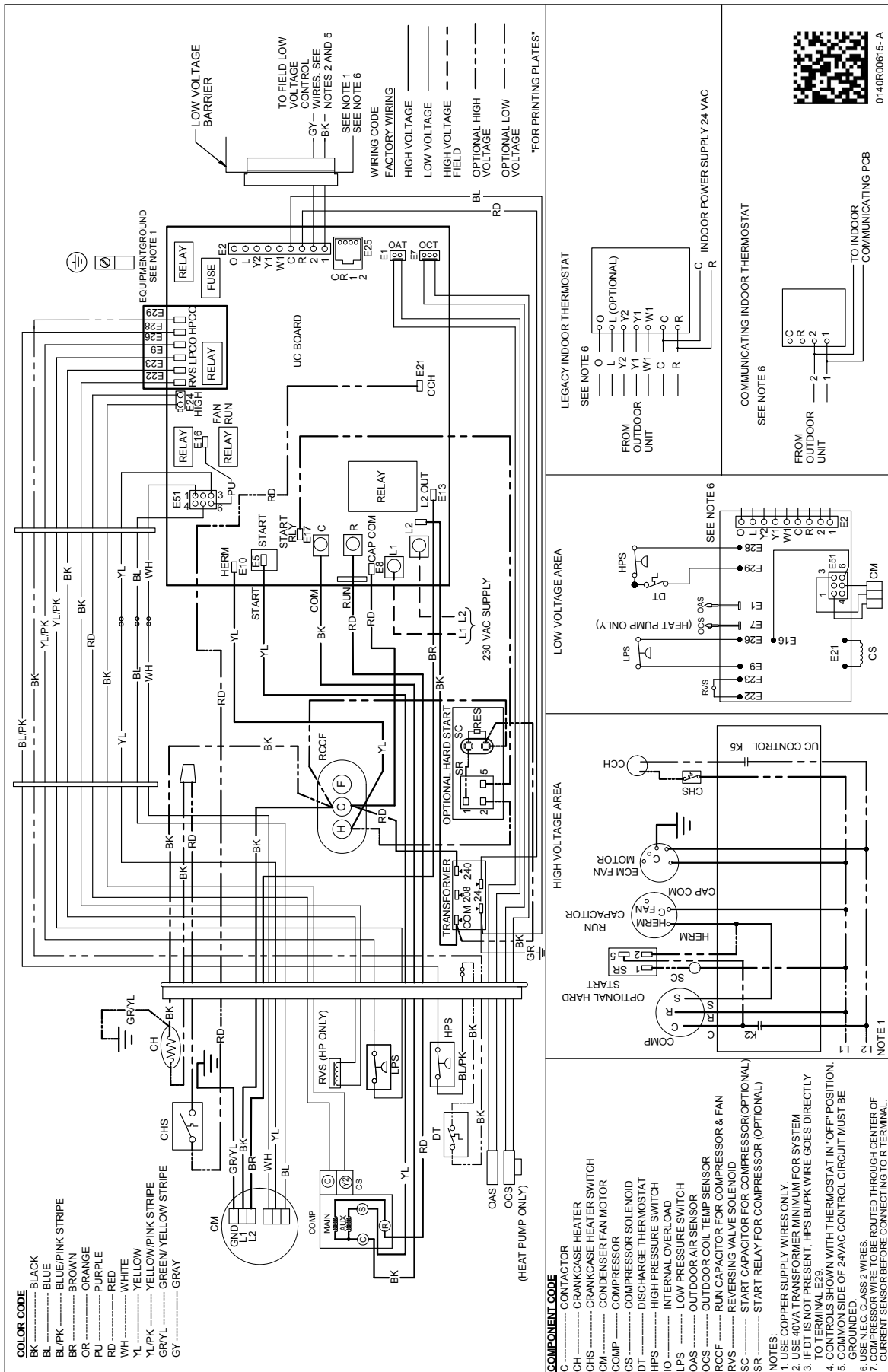
Calculations are based on nominal CFM and 70 °F indoor dry bulb.

Note: Shaded area is AHRI Rating Conditions at 47°F outdoor ambient temperature

Amps = Outdoor unit amps (comp.+fan)

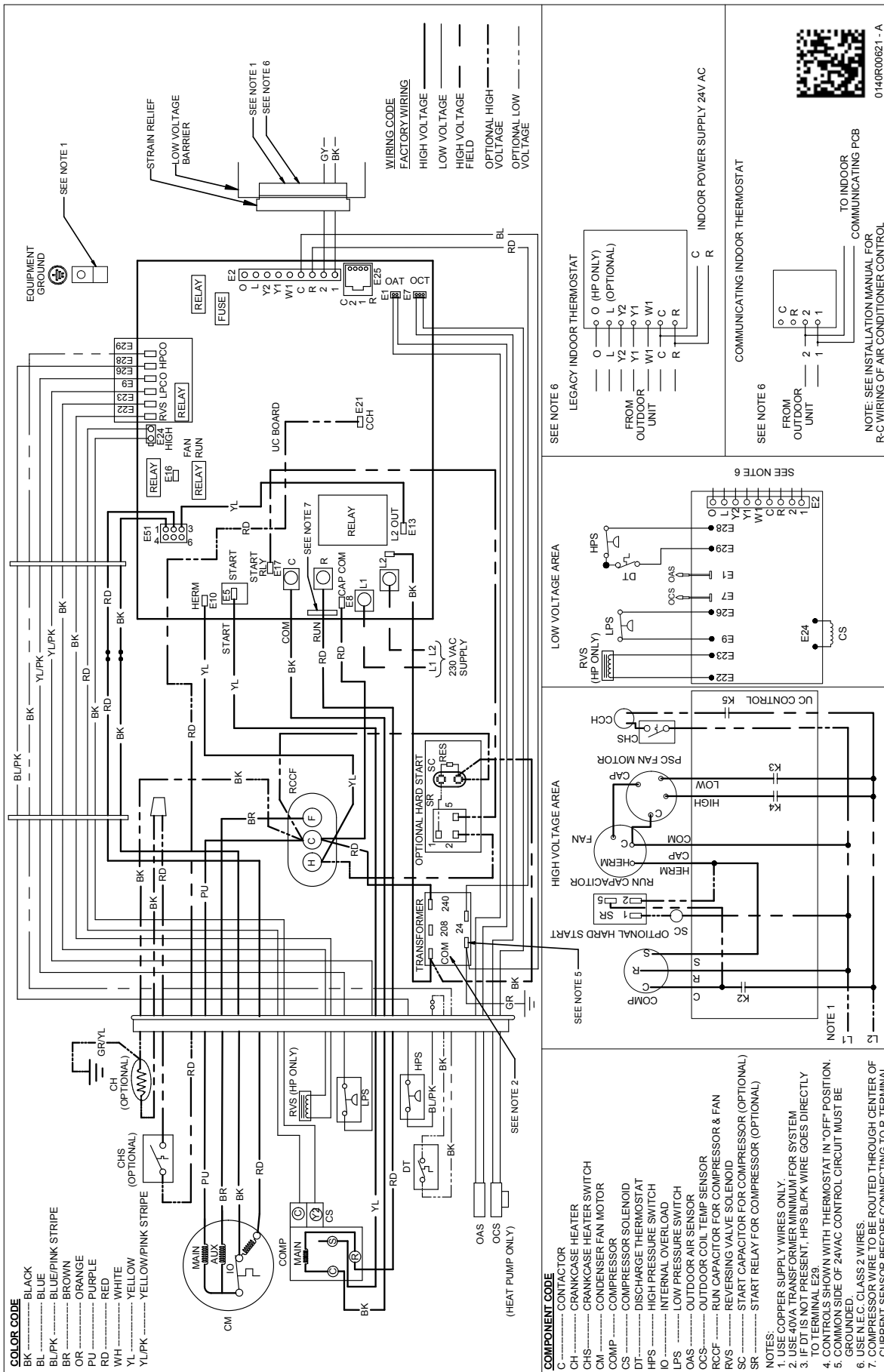
kW = Total system power





WARNING

High Voltage: Disconnect all power before servicing or installing this unit. Multiple power sources may be present. Failure to do so may cause property damage, personal injury, or death.



WARNING
 High Voltage: Disconnect all power before servicing or installing this unit. Multiple power sources may be present. Failure to do so may cause property damage, personal injury, or death.

Wiring is subject to change. Always refer to the wiring diagram or the unit for the most up-to-date wiring.

MODEL	DESCRIPTION	GSZC16 024**	GSZC16 036**	GSZC16 048**	GSZC16 060**
ABK-20	Anchor Bracket Kit [◇]				
B1141643 ¹	24V Transformer	X	X	X	X
CSR-U-1	Hard-start Kit	X			
CSR-U-2	Hard-start Kit		X		
CSR-U-3	Hard-start Kit			X	X
FSK01A ²	Freeze Protection Kit	X	X	X	X
OT18-60A ³	Outdoor Thermostat/Lockout Thermostat	X	X	X	X
TX2N4	TXV Kit				
TX2N4A	TXV Kit	X			
TX3N4	TXV Kit		X		
TX5N4	TXV Kit			X	X

◇ Contains 20 brackets; four brackets needed to anchor unit to pad

¹ Available in 24V legacy mode only. This feature is integrated in the communicating mode.

² Installed on indoor coil

³ Available in 24V legacy mode only. This feature is integrated in the communicating mode. Required for heat pump applications where ambient temperature falls below 0 °F with 50% or higher relative humidity.

Note: Maximum number of installed accessories at the same time is limited by the size of the unit's control box.

All AHRI system ratings are accessible in the System Configurator tool via PartnerLink.